



Pembridge Place, Putney
£2,900 pcm

Summary

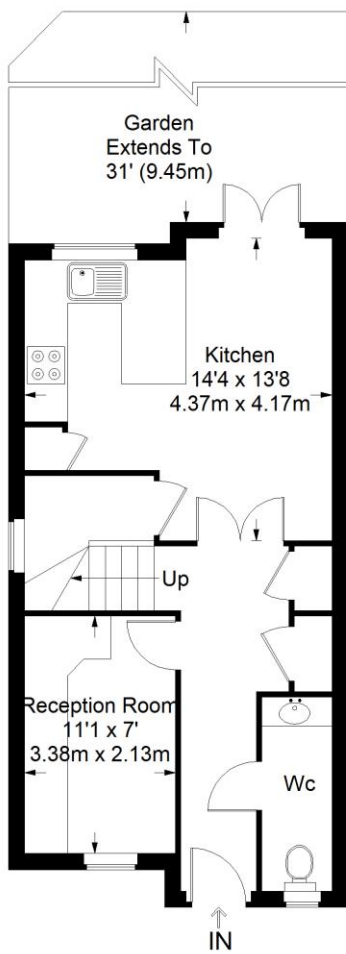
ABOUT THE PROPERTY: Brinkley's are proud to present this spacious home. Looking for an easy commute to work? With the station just a few minutes' walk, getting in and out of London is a breeze, plus there are a great selection of local shops, bars and restaurants close by. This fantastic, three bedroom home has everything you need. Located only a short walk to the delightful Wandsworth Park which overlooks the River Thames, this one is not to be missed!

HOW TO VIEW: Please call our Wimbledon Hill office on 020 8944 2918, our Wimbledon Park branch on 020 8879 3718 or our Putney office on 020 8785 3652, for more information and to arrange a viewing. Open 7 days a week. Viewings Mon- Fri 8-8, Weekends 9-6.

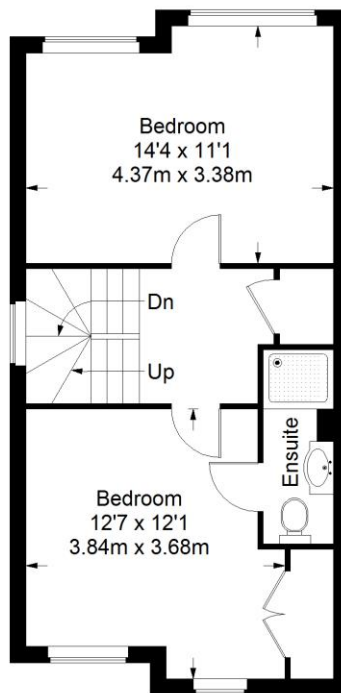
Energy Efficiency Rating: C



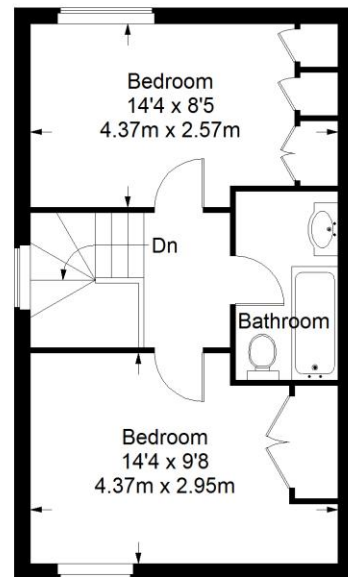
Pembridge Place



Ground Floor = 414 sq ft



First Floor = 413 sq ft



Second Floor = 356 sq ft

Approximate Gross Internal Area
 GROUND FLOOR = 414 sq ft / 38.46 sq m
 FIRST FLOOR = 413 sq ft / 38.37 sq m
 SECOND FLOOR = 356 sq ft / 33.07 sq m
 Total = 1183 sq ft / 109.90 sq m



This plan is for layout guidance only. Not drawn to scale unless stated. Windows and door openings are approximate. Whilst every care is taken in the preparation of this plan, please check all dimensions, shapes and compass bearings before making any decisions reliant upon them. (ID357409)

