



Flat, Aston Court, Lansdowne Road, Wimbledon Village  
**£2,500 pcm**

**Summary**

Location: Brinkley's Estate Agents are pleased to present this stunning, three double bedroom, ground floor, apartment in Aston Court on Lansdowne Road, in Wimbledon Village. Within close proximity of Wimbledon Village, High Street, Wimbledon town centre (excellent transport links - District Line and mainline station), excellent bus links and close to all local amenities.

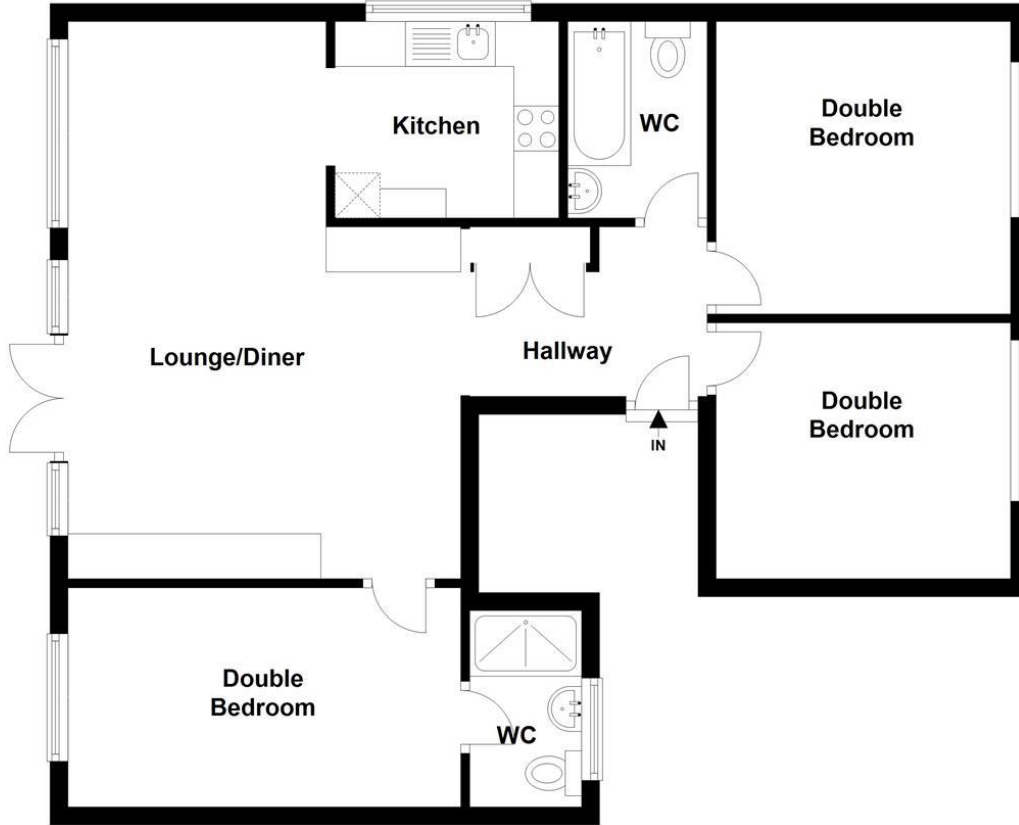
About the property: The property benefits from three, large, double bedrooms, a large, double reception (sitting area and dining area), a fully-fitted and modern kitchen, family bathroom, a private, decked garden and driveway parking. Offered furnished **MUST BE SEEN**.

To View Please call our Wimbledon Hill office on 020 8944 2918, Wimbledon Park on 020 8879 3718 or our Putney office on 020 8785 3652.

Energy Efficiency Rating: D



## Floor Plan



Energy Efficiency Rating		
	Current	Potential
Very energy efficient - lower running costs		
(92-100) <b>A</b>		
(81-91) <b>B</b>		
(69-80) <b>C</b>		
(55-68) <b>D</b>	<b>62</b>	<b>72</b>
(39-54) <b>E</b>		
(21-38) <b>F</b>		
(1-20) <b>G</b>		
Not energy efficient - higher running costs		
<b>England &amp; Wales</b>	EU Directive 2002/91/EC	

Environmental Impact (CO <sub>2</sub> ) Rating		
	Current	Potential
Very environmentally friendly - lower CO <sub>2</sub> emissions		
(92-100) <b>A</b>		
(81-91) <b>B</b>		
(69-80) <b>C</b>		
(55-68) <b>D</b>	<b>55</b>	<b>67</b>
(39-54) <b>E</b>		
(21-38) <b>F</b>		
(1-20) <b>G</b>		
Not environmentally friendly - higher CO <sub>2</sub> emissions		
<b>England &amp; Wales</b>	EU Directive 2002/91/EC	