

Flat, Rainsborough House, Stamford Square, Putney
£1,650 pcm

Summary

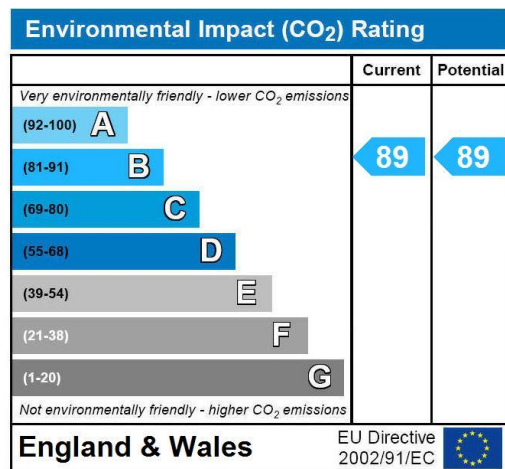
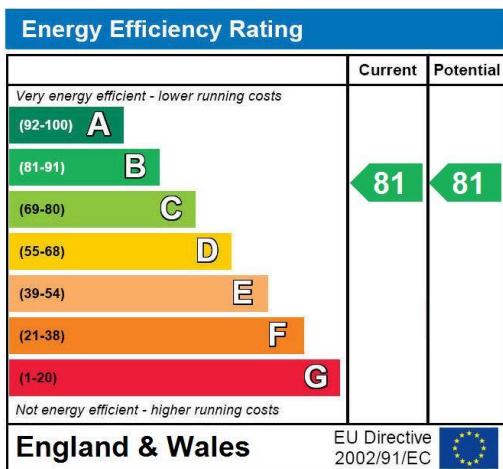
Brinkley's Estate Agents are pleased to bring to the market this fantastic, one bedroom, first floor apartment in the modern, Stamford Square development, in the heart of East Putney. The accommodation comprises a spacious, open-plan lounge/diner to kitchen, double bedroom, a modern bathroom and good storage.

This property is perfectly located for easy access to all the shops and amenities that Putney has to offer and benefits from having excellent transport links with East Putney Tube Station only moments away and Putney Station being a short walking distance. This property must be seen and will not be in the market long. Please call Brinkley's of Putney on 02087853652.



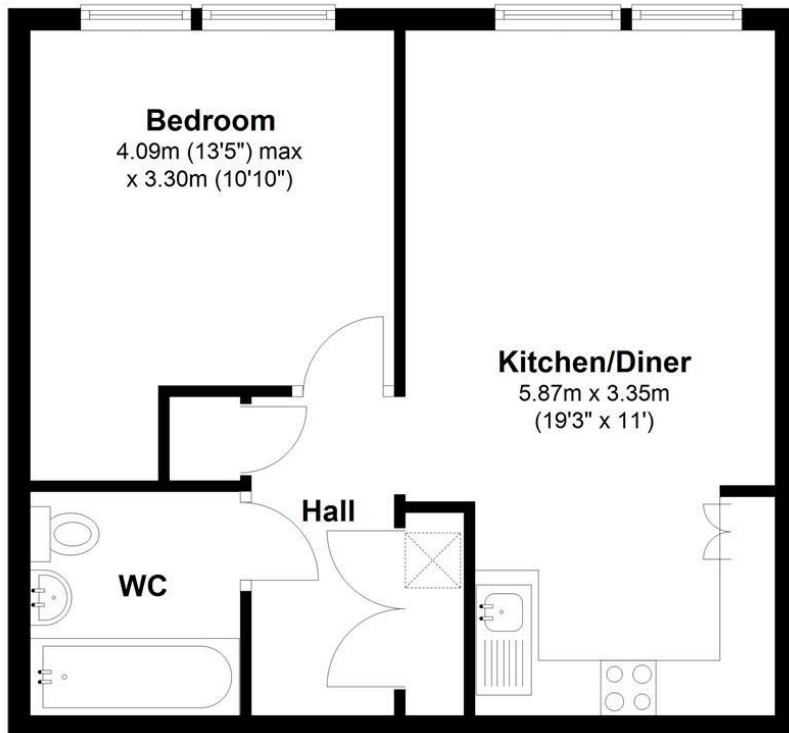
These particulars are intended to give a fair description of the property but their accuracy cannot be guaranteed, and they do not constitute an offer of contract. Intending purchasers must rely on their own inspection of the property. None of the above appliances/services have been tested by ourselves. We recommend purchasers arrange for a qualified person to check all appliances/services before legal commitment.

Energy Efficiency Rating: B



Ground Floor

Approx. 40.8 sq. metres (438.9 sq. feet)



Total area: approx. 40.8 sq. metres (438.9 sq. feet)