



Flat, Lambeth Court, Frogmore, Wandsworth
£1,600 pcm

Summary

SHORT LET 1-3 MONTHS

Spacious top floor one bed with secure parking perfect for a single professional or couple. Call Brinkley's on 02087853652 to arrange a viewing.

Space is no issue with this fantastic, purpose-built property located moments away from Wandsworth Town is a ideal spot to unwind after a busy day in the office. The large living room is a real sun trap, lit up by the large windows, making it the



These particulars are intended to give a fair description of the property but their accuracy cannot be guaranteed, and they do not constitute an offer of contract. Intending purchasers must rely on their own inspection of the property. None of the above appliances/services have been tested by ourselves. We recommend purchasers arrange for a qualified person to check all appliances/services before legal commitment.

perfect place to relax with a book or to catch up on your favorite TV show. To the rear of the property you will find a larger than average bedroom and bathroom. Apartments like this do not come up often, call now to arrange a viewing.

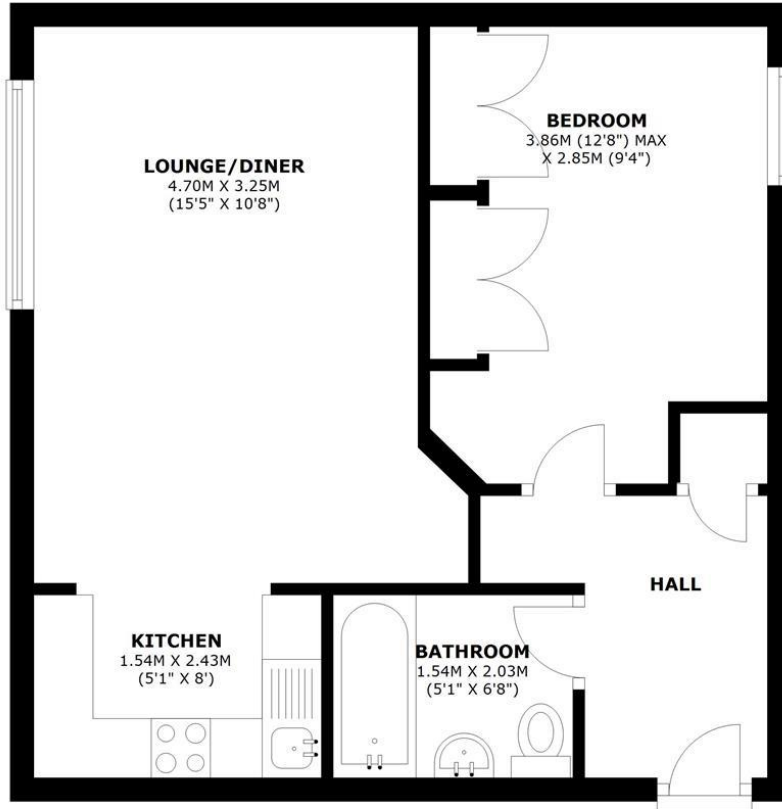
HOW TO VIEW: Please call our Wimbledon Hill office on 020 8944 2918, our Wimbledon Park branch on 020 8879 3718 or our Putney office on 020 8785 3652, for more information and to arrange a viewing. Open 7 days a week. viewings Mon- Fri 8-8, Weekends 9-6.

Energy Efficiency Rating: D



SECOND FLOOR

APPROX. 39.3 SQ. METRES (422.6 SQ. FEET)



TOTAL AREA: APPROX. 39.3 SQ. METRES (422.6 SQ. FEET)

Energy Efficiency Rating		
	Current	Potential
Very energy efficient - lower running costs		
(92-100) A		
(81-91) B		
(69-80) C		
(55-68) D	64	76
(39-54) E		
(21-38) F		
(1-20) G		
Not energy efficient - higher running costs		
England & Wales	EU Directive 2002/91/EC	

Environmental Impact (CO ₂) Rating		
	Current	Potential
Very environmentally friendly - lower CO ₂ emissions		
(92-100) A		
(81-91) B		
(69-80) C		80
(55-68) D	66	
(39-54) E		
(21-38) F		
(1-20) G		
Not environmentally friendly - higher CO ₂ emissions		
England & Wales	EU Directive 2002/91/EC	