



Flat, Grand Tower, Plaza Gardens, Putney
£2,448 pcm

Summary

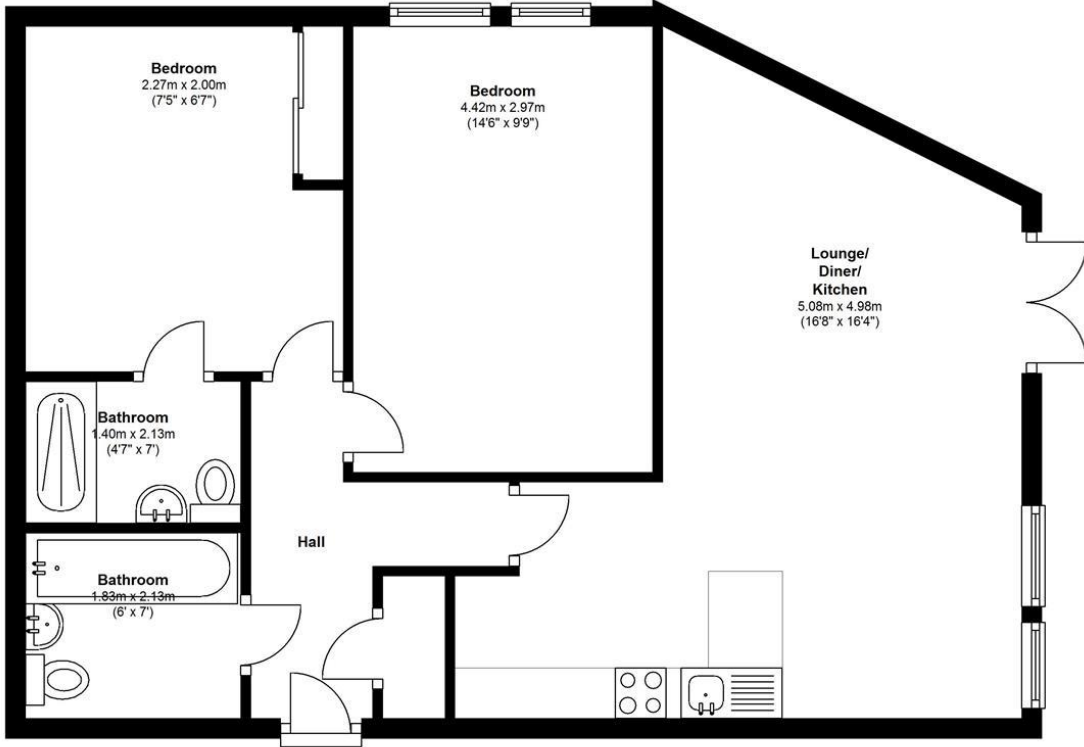
A brand new, two bedroom, two bathroom, luxury apartment set on the sixth floor of this fantastic, tower in Putney Plaza. The property is offered designer-furnished and benefits from a large, spacious, open-plan kitchen with breakfast area, en-suite and family bathroom and a private balcony. Putney Plaza offers residents 24-hour concierge, fitness facilities, communal gardens and close transport links.

Parking bay available through separate negotiation.

Energy Efficiency Rating: B



Sixth Floor
Approx. 62.5 sq. metres (673.2 sq. feet)



Total area: approx. 62.5 sq. metres (673.2 sq. feet)

Energy Efficiency Rating		
	Current	Potential
Very energy efficient - lower running costs		
(92-100) A		
(81-91) B		
(69-80) C		
(55-68) D		
(39-54) E		
(21-38) F		
(1-20) G		
Not energy efficient - higher running costs		
England & Wales	81	81
	EU Directive 2002/91/EC	

Environmental Impact (CO ₂) Rating		
	Current	Potential
Very environmentally friendly - lower CO ₂ emissions		
(92-100) A		
(81-91) B	90	90
(69-80) C		
(55-68) D		
(39-54) E		
(21-38) F		
(1-20) G		
Not environmentally friendly - higher CO ₂ emissions		
England & Wales	90	90
	EU Directive 2002/91/EC	