



Flat, Merton Mansions, Bushey Road, Raynes Park

£1,300 pcm

Summary

VIDEO TOURS AVAILABLE - RESERVE YOUR NEW HOME TODAY - OPEN TO OFFERS

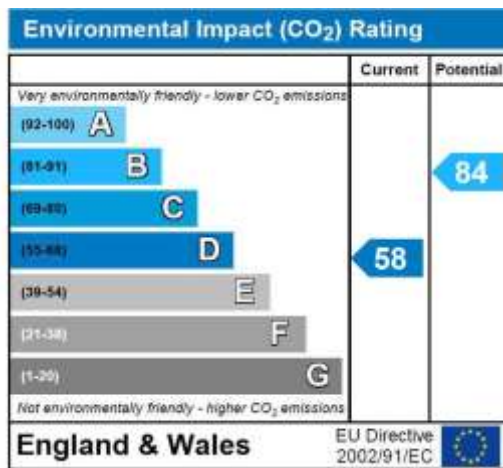
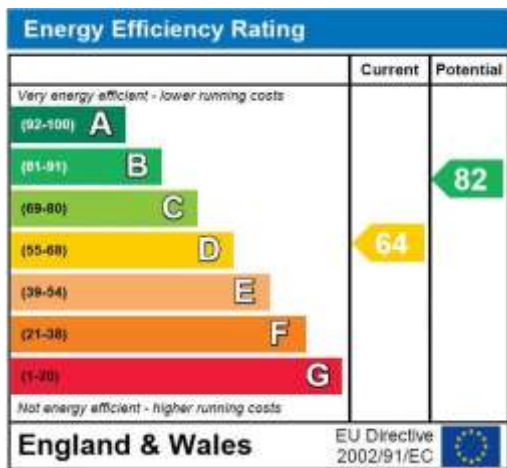
ABOUT THE PROPERTY: Brinkley's Estate Agents are pleased to present this stunning, two bedroom, first floor flat, ideally located in a quiet development within close proximity to both Raynes Park and Wimbledon Chase train stations. The property comprises a large entrance hall, a spacious lounge/dining room, a modern fitted kitchen, two large double bedrooms and a bathroom with shower over the bath. Further benefits include gas central heating, double glazing throughout and off-street parking. The schools in the area are Wimbledon Chase, Joseph Hood and West Wimbledon Primary. The property is offered unfurnished.



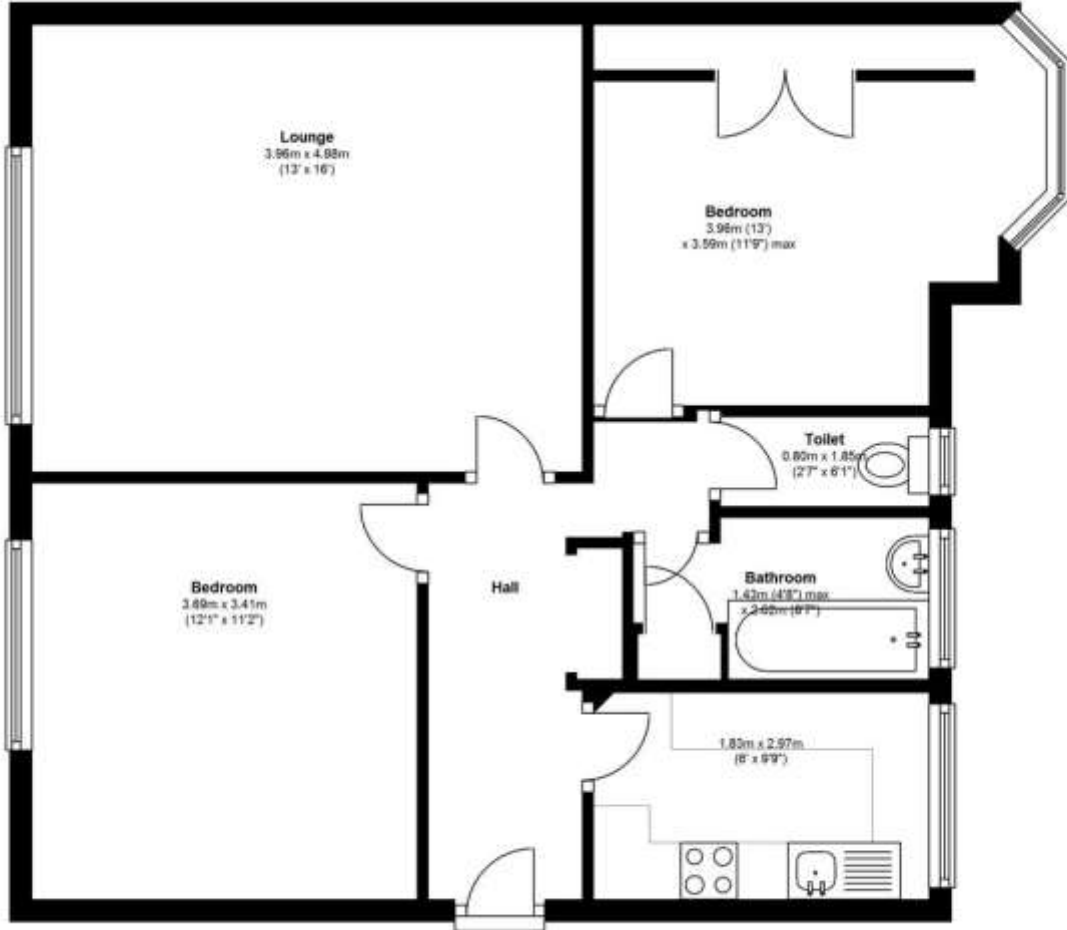
These particulars are intended to give a fair description of the property but their accuracy cannot be guaranteed, and they do not constitute an offer of contract. Intending purchasers must rely on their own inspection of the property. None of the above appliances/services have been tested by ourselves. We recommend purchasers arrange for a qualified person to check all appliances/services before legal commitment.

HOW TO VIEW: Please call our Wimbledon Hill office on 020 8944 2918, our Wimbledon Park branch on 020 8879 3718 or our Putney office on 020 8785 3652, for more information and to arrange a viewing. Open 7 days a week. viewings Mon- Fri 8-8, Weekends 9-6.

Energy Efficiency Rating: D



Ground Floor
Approx. 63.0 sq. metres (677.7 sq. feet)



Total area: approx. 63.0 sq. metres (677.7 sq. feet)