

Flat, Hatton House, Hartfield Road, Wimbledon  
**£2,000 pcm**

**Summary**

NO TENANT FEES

ABOUT THE PROPERTY: Brinkley's Estate Agents are pleased to present this smart, two bedroom, apartment. The property is comprised of a bright, open-plan reception with a private balcony and a high-specification kitchen with integrated appliances. The master bedroom provides ample built-in storage and there is a further double bedroom and a family bathroom with a shower over bath. The property also benefits from lift access and a secure, entry-phone system. The property is offered unfurnished.



These particulars are intended to give a fair description of the property but their accuracy cannot be guaranteed, and they do not constitute an offer of contract. Intending purchasers must rely on their own inspection of the property. None of the above appliances/services have been tested by ourselves. We recommend purchasers arrange for a qualified person to check all appliances/services before legal commitment.

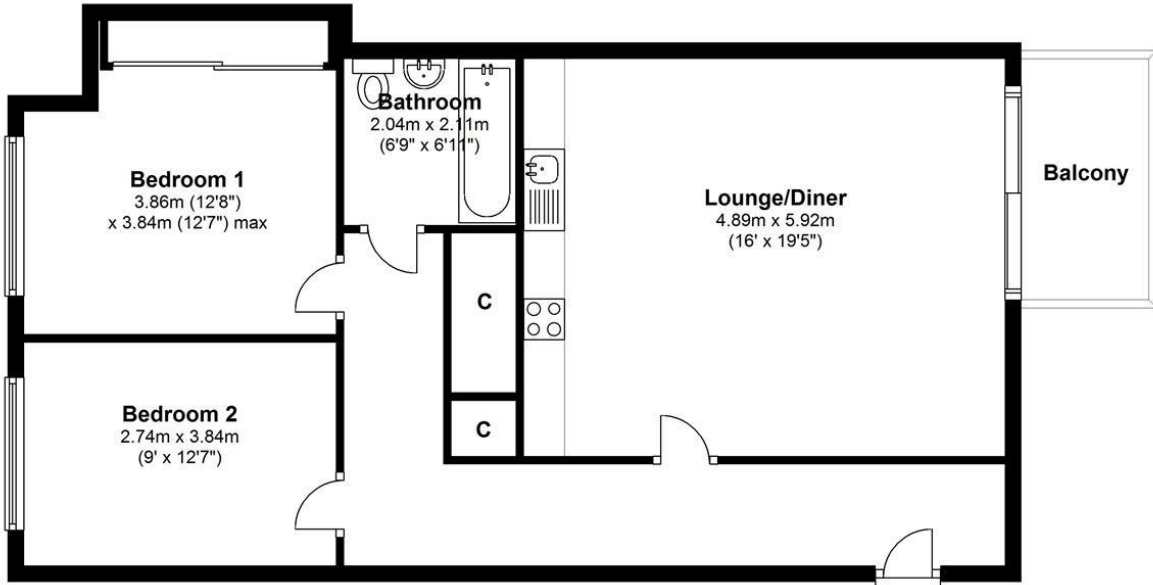
HOW TO VIEW: Please call our Wimbledon Hill office on 020 8944 2918, our Wimbledon Park branch on 020 8879 3718 or our Putney office on 020 8785 3652, for more information and to arrange a viewing. Open 7 days a week. Viewings Mon- Fri 8-8, Weekends 9-6.

Energy Efficiency Rating: B



### Third Floor

Approx. 75.9 sq. metres (817.1 sq. feet)



Total area: approx. 75.9 sq. metres (817.1 sq. feet)

Energy Efficiency Rating		
	Current	Potential
Very energy efficient - lower running costs		
(92-100) <b>A</b>		
(81-91) <b>B</b>	<b>88</b>	<b>88</b>
(69-80) <b>C</b>		
(55-68) <b>D</b>		
(39-54) <b>E</b>		
(21-38) <b>F</b>		
(1-20) <b>G</b>		
Not energy efficient - higher running costs		
<b>England &amp; Wales</b>	EU Directive 2002/91/EC	

Environmental Impact (CO <sub>2</sub> ) Rating		
	Current	Potential
Very environmentally friendly - lower CO <sub>2</sub> emissions		
(92-100) <b>A</b>		
(81-91) <b>B</b>	<b>89</b>	<b>89</b>
(69-80) <b>C</b>		
(55-68) <b>D</b>		
(39-54) <b>E</b>		
(21-38) <b>F</b>		
(1-20) <b>G</b>		
Not environmentally friendly - higher CO <sub>2</sub> emissions		
<b>England &amp; Wales</b>	EU Directive 2002/91/EC	