



Flat, Grosvenor Court, Rayners Lane, Putney
£1,825 pcm

Summary

ABOUT THE PROPERTY: Brinkley's are pleased to bring onto the market this modern and well presented, two double bedroom apartment in a well known residential purpose built block. Comprising of two double bedrooms with plenty of storage, large open plan living room / dining room with doors leading onto a balcony and a modern kitchen with all modern appliances and garage. Close to all transport links, shops and restaurants of Putney. A MUST VIEW.

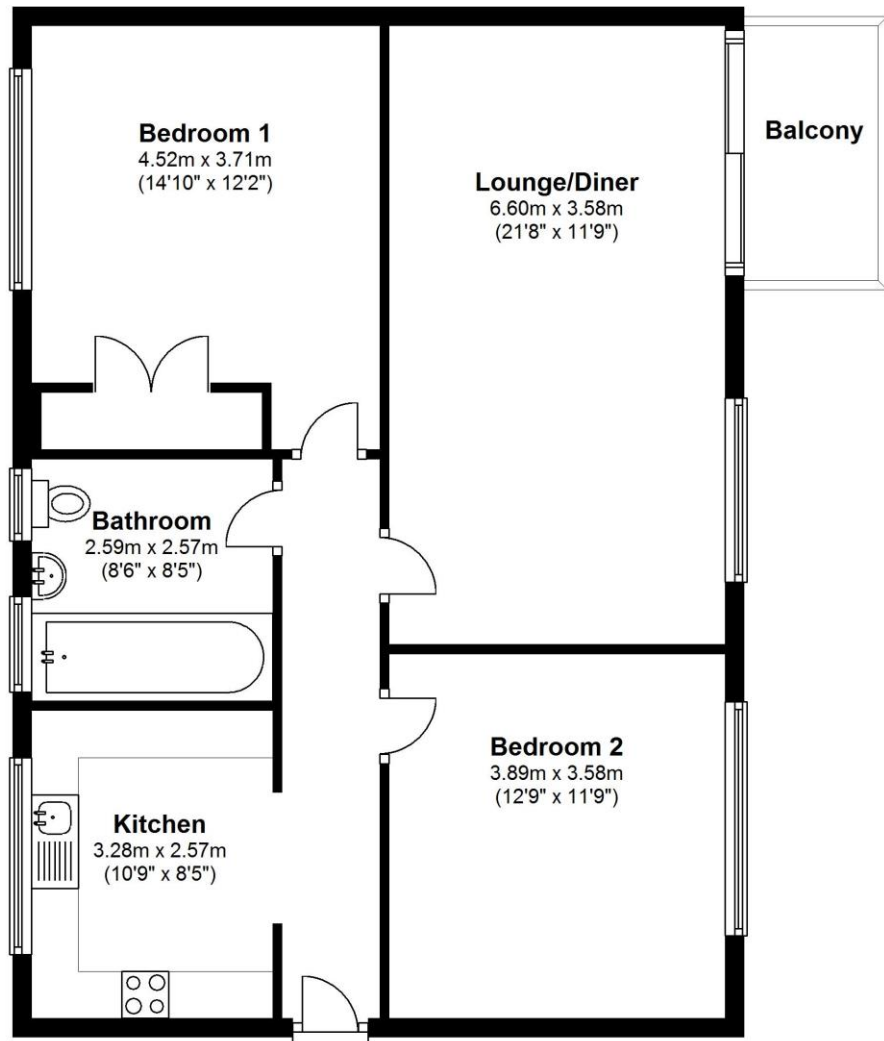
HOW TO VIEW: Please call our Wimbledon Hill office on 020 8944 2918, our Wimbledon Park branch on 020 8879 3718 or our Putney office on 020 8785 3652, for more information and to arrange a viewing. Open 7 days a week. viewings Mon- Fri 8-8, Weekends 9-6.

Energy Efficiency Rating: D



Third Floor

Approx. 78.2 sq. metres (841.8 sq. feet)



Total area: approx. 78.2 sq. metres (841.8 sq. feet)

