



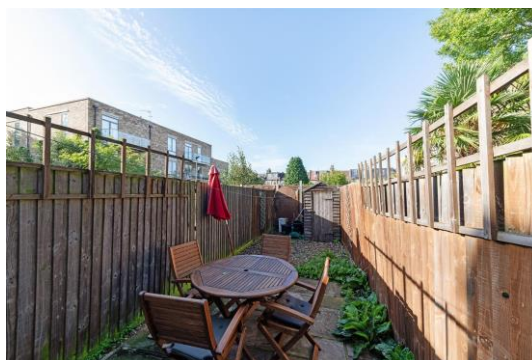
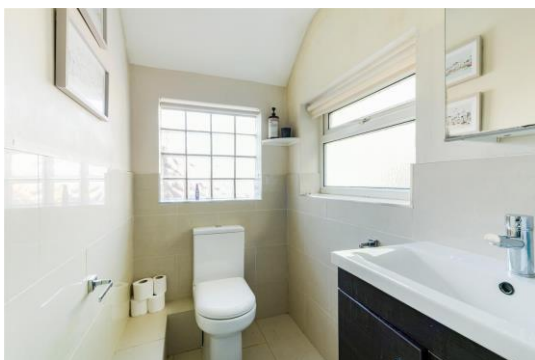
Flat, Kingston Road, Raynes Park  
**£1,350 pcm**

**Summary**

ABOUT THE PROPERTY: Brinkley's are pleased to present this spacious and exceptionally well presented, ground floor, one bedroom, garden flat which has been completely refurbished. The property is situated within 10 minutes walk from Raynes Park Station and benefits from its own private rear garden with patio. The maisonette comprises a large reception room with wood flooring and gas central heating, a good sized eat-in kitchen plus the added benefit of a separate utility area, a large double bedroom with built-in storage and a modern bathroom / shower.

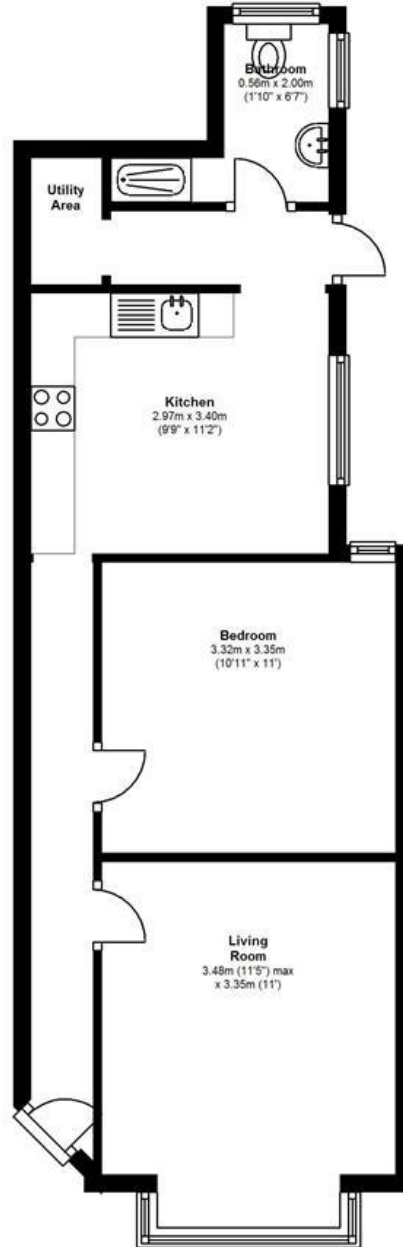
HOW TO VIEW: Please call our Wimbledon Hill office on 020 8944 2918, our Wimbledon Park branch on 020 8879 3718 or our Putney office on 020 8785 3652, for more information and to arrange a viewing. Open 7 days a week. Viewings Mon- Fri 8-8, Weekends 9-6.

Energy Efficiency Rating: D



**Ground Floor**

Approx. 46.6 sq. metres (501.7 sq. feet)



Total area: approx. 46.6 sq. metres (501.7 sq. feet)

