



Vernon Avenue, Raynes Park
£1,595 pcm

Summary

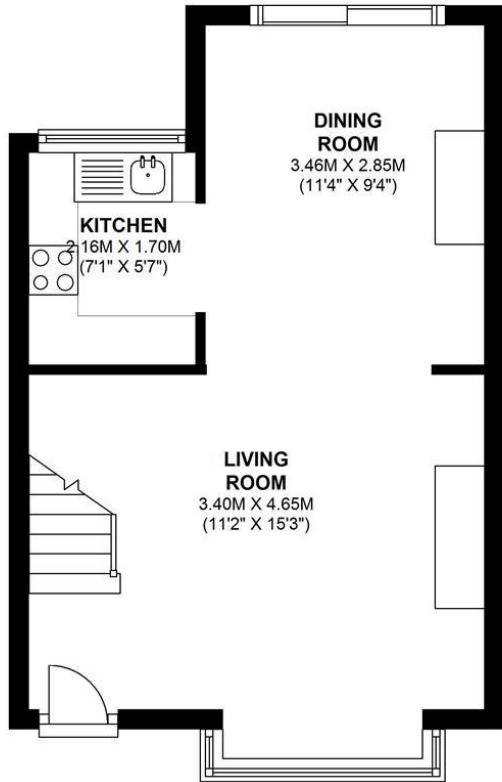
ABOUT THE PROPERTY: Brinkley's of Wimbledon are pleased to bring to market this recently refurbished, two double bedroom, end of terrace house on Vernon Avenue, in the ever-popular Apostles area of Raynes Park. This property comprises two double bedrooms (both with fitted wardrobes), a modern bathroom, double reception, a modern, fully-fitted kitchen and a large westerly-facing garden. This property is offered unfurnished and would best suit professional sharers or a young family.

HOW TO VIEW: Please call our Wimbledon Hill office on 020 8944 2918, our Wimbledon Park branch on 020 8879 3718 or our Putney office on 020 8785 3652, for more information and to arrange a viewing. Open 7 days a week. viewings Mon- Fri 8-8, Weekends 9-6.

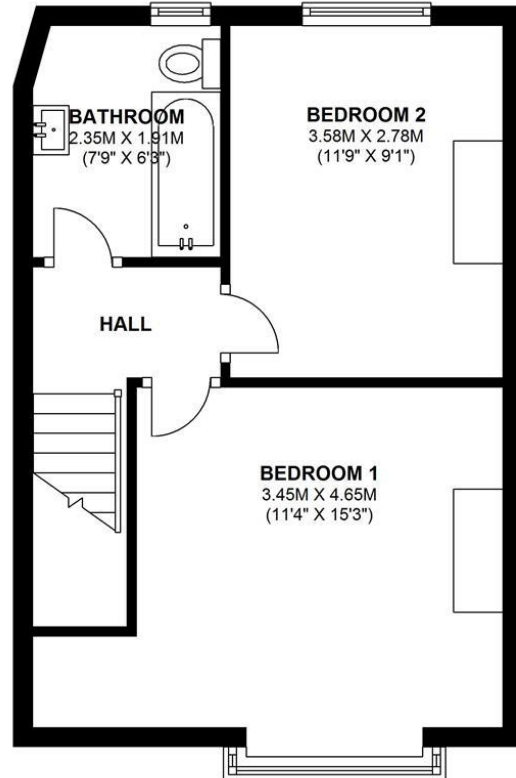
Energy Efficiency Rating: E



GROUND FLOOR
APPROX. 30.5 SQ. METRES (328.4 SQ. FEET)



FIRST FLOOR
APPROX. 34.4 SQ. METRES (370.1 SQ. FEET)



TOTAL AREA: APPROX. 64.9 SQ. METRES (698.4 SQ. FEET)

Energy Efficiency Rating		
	Current	Potential
Very energy efficient - lower running costs		
(92-100) A		
(81-91) B		
(69-80) C		
(55-68) D		
(39-54) E	54	55
(21-38) F		
(1-20) G		
Not energy efficient - higher running costs		
England & Wales	EU Directive 2002/91/EC	

Environmental Impact (CO ₂) Rating		
	Current	Potential
Very environmentally friendly - lower CO ₂ emissions		
(92-100) A		
(81-91) B		
(69-80) C		
(55-68) D		
(39-54) E	51	51
(21-38) F		
(1-20) G		
Not environmentally friendly - higher CO ₂ emissions		
England & Wales	EU Directive 2002/91/EC	