



Penthouse, Swish Building, Upper Richmond Road, Putney  
**£2,700 pcm**

**Summary**

ABOUT THE PROPERTY: Brinkley's are pleased to offer a contemporary, two bedroom two bathroom PENTHOUSE apartment situated on the 6th floor in Swish building. With panoramic views over Putney and beyond through the floor to ceiling windows and through the wrap around balcony. The accommodation comprises two double bedrooms, two bathrooms including one en suite, an open-plan reception room with fully fitted kitchen and a large wrap-around private balcony. Residents further benefit from a 24-hour porter and underground secure parking space. Transport links include East Putney underground.

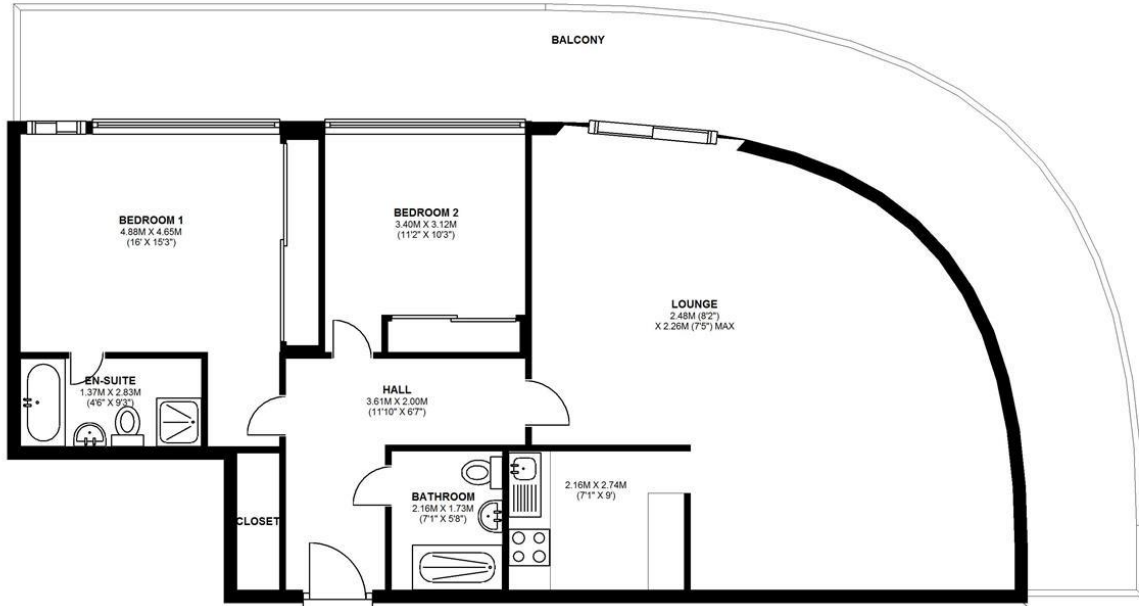
Available immediately as unfurnished. This sought after development is located moments from East Putney Tube Station (District Line) and only a short walk to central Putney and the main Putney Station (National Rail).

HOW TO VIEW: Please call our Wimbledon Hill office on 020 8944 2918, our Wimbledon Park branch on 020 8879 3718 or our Putney office on 020 8785 3652, for more information and to arrange a viewing. Open 7 days a week. viewings Mon- Fri 8-8, Weekends 9-6.

Energy Efficiency Rating: D



**SIXTH FLOOR**  
APPROX. 79.5 SQ. METRES (855.2 SQ. FEET)



TOTAL AREA: APPROX. 79.5 SQ. METRES (855.2 SQ. FEET)

Energy Efficiency Rating		
	Current	Potential
Very energy efficient - lower running costs		
(92-100) <b>A</b>		
(81-91) <b>B</b>		
(69-80) <b>C</b>		
(55-68) <b>D</b>	<b>58</b>	<b>58</b>
(39-54) <b>E</b>		
(21-38) <b>F</b>		
(1-20) <b>G</b>		
Not energy efficient - higher running costs		
<b>England &amp; Wales</b>	EU Directive 2002/91/EC	

Environmental Impact (CO <sub>2</sub> ) Rating		
	Current	Potential
Very environmentally friendly - lower CO <sub>2</sub> emissions		
(92-100) <b>A</b>		
(81-91) <b>B</b>		
(69-80) <b>C</b>		
(55-68) <b>D</b>	<b>62</b>	<b>62</b>
(39-54) <b>E</b>		
(21-38) <b>F</b>		
(1-20) <b>G</b>		
Not environmentally friendly - higher CO <sub>2</sub> emissions		
<b>England &amp; Wales</b>	EU Directive 2002/91/EC	