



Vernon Avenue, Raynes Park
£1,800 pcm

Summary

ABOUT THE PROPERTY: Brinkley's of Wimbledon are pleased to offer to the market, this stunning, two double bedroom, end of terrace house located in the ever-popular Apostles area of Raynes Park. Having been refurbished last year, the property comprises two double bedrooms, a bathroom, a spacious lounge/kitchen area, conservatory, downstairs W.C and a private rear garden. Located moments away from Raynes Park Station and amenities.

LOCATION: Raynes Park is a fantastic area the high street is bustling with life, fantastic selection of high street shops including Boots, Waitrose and a stunning selection of cafes and restaurants.



These particulars are intended to give a fair description of the property but their accuracy cannot be guaranteed, and they do not constitute an offer of contract. Intending purchasers must rely on their own inspection of the property. None of the above appliances/services have been tested by ourselves. We recommend purchasers arrange for a qualified person to check all appliances/services before legal commitment.

HOW TO VIEW: Please call our Wimbledon Hill office on 020 8944 2918, our Wimbledon Park branch on 020 8879 3718 or our Putney office on 020 8785 3652, for more information and to arrange a viewing. Open 7 days a week. viewings Mon- Fri 8-8, Weekends 9-6.

Energy Efficiency Rating: E



Vernon Road, SW20

Approximate Gross Internal Area = 94.9 sq m / 1021 sq ft

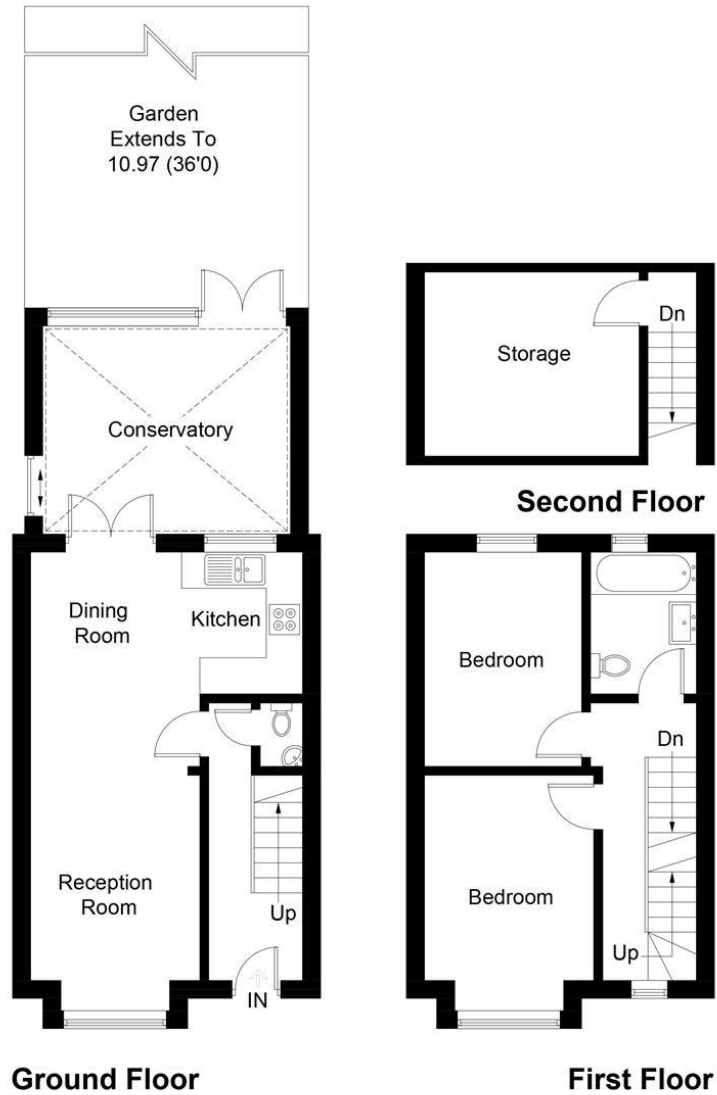


Illustration for identification purposes only, measurements are approximate, not to scale. FloorplansUsketch.com © 2017 (ID356533)

