



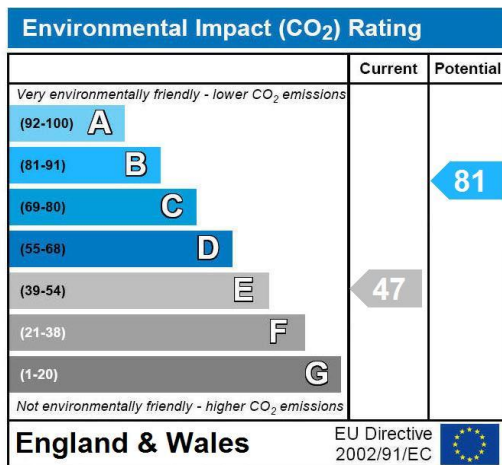
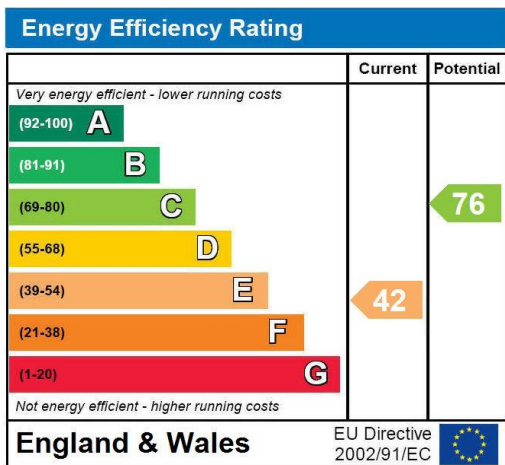
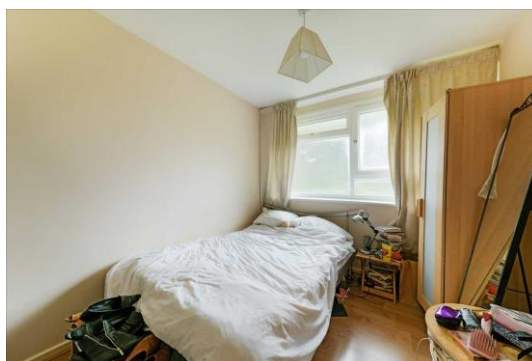
Leylands, Viewfield Road, Putney
£1,395 pcm

Summary

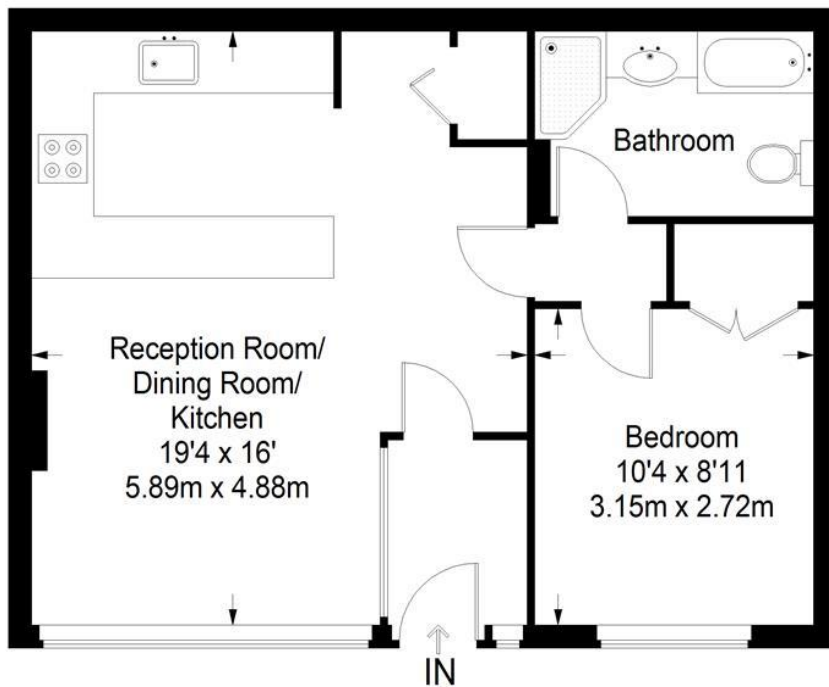
Brinkley's Putney are pleased to offer this lovely, one bedroom property, located within moments of East Putney, with all the fashionable shops and restaurants that Putney has to offer. Located on the ground floor of this private and attractive development with secluded private gardens, this property is perfect for a professional couple. Available in March 2020 and benefiting from a recent and extensive refurbishment, including a luxury bathroom and kitchen. Fully double glazed with a garage available by separate negotiation and falling within the Wandsworth council tax.

HOW TO VIEW: Please call our Wimbledon Hill office on 020 8944 2918, our Wimbledon Park branch on 020 8879 3718 or our Putney office on 020 8785 3652, for more information and to arrange a viewing. Open 7 days a week. viewings Mon- Fri 8-8, Weekends 9-6.

Energy Efficiency Rating E



Leylands Viewfield Road



Ground Floor = 488 sq ft

Approximate Gross Internal Area
GROUND FLOOR = 488 sq ft / 45.34 sq m
Total = 488 sq ft / 45.34 sq m



This plan is for layout guidance only. Not drawn to scale unless stated. Windows and door openings are approximate. Whilst every care is taken in the preparation of this plan, please check all dimensions, shapes and compass bearings before making any decisions reliant upon them. (ID357409)