



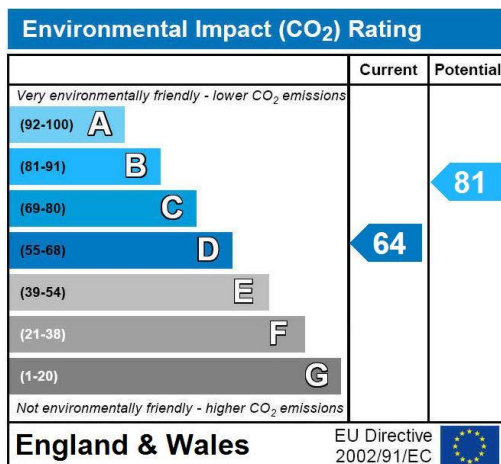
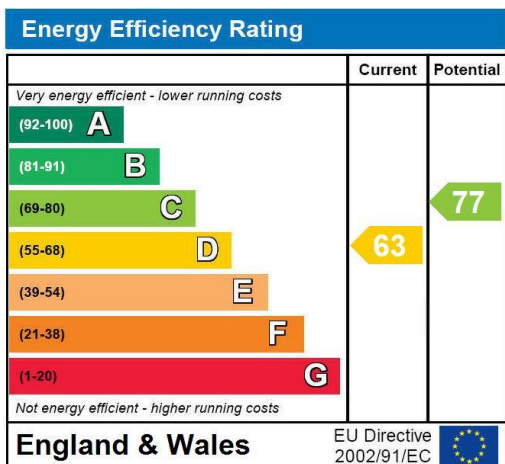
Flat, Kingston Road, Raynes Park  
**£1,450 pcm**

**Summary**

ABOUT THE PROPERTY: Brinkley's Estate Agents are pleased to present this lovely, two double bedroom, ground floor flat, off Kingston Road in Raynes Park. Within close proximity to both Wimbledon Chase and Raynes Park mainline stations, excellent bus links and close to all local amenities and easy access to the A3. This modern, flat comprises two double bedrooms, a modern, family bathroom, fully-fitted kitchen and a double reception leading to a private garden. Offered furnished, this apartment would suit professional tenants. **MUST BE SEEN.**

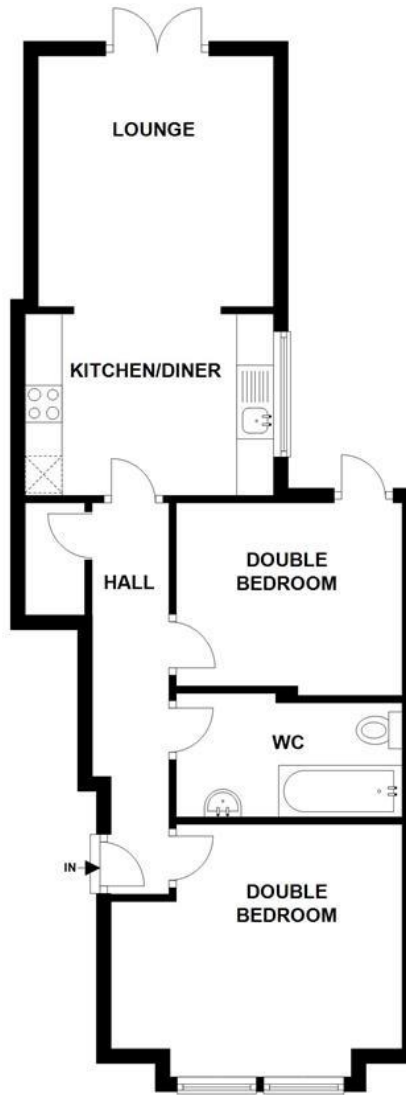
HOW TO VIEW: Please call our Wimbledon Hill office on 020 8944 2918, Wimbledon Park on 020 8879 3718 or our Putney office on 020 8785 3652.

EPC: D



**GROUND FLOOR**

APPROX. 53.6 SQ. METRES (577.2 SQ. FEET)



TOTAL AREA: APPROX. 53.6 SQ. METRES (577.2 SQ. FEET)