



Ashen Grove, Wimbledon Park
£2,900 pcm

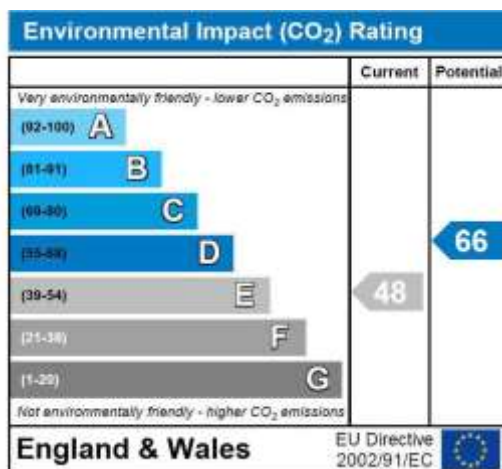
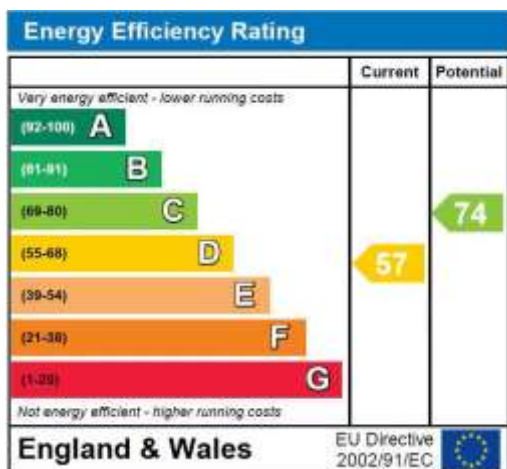
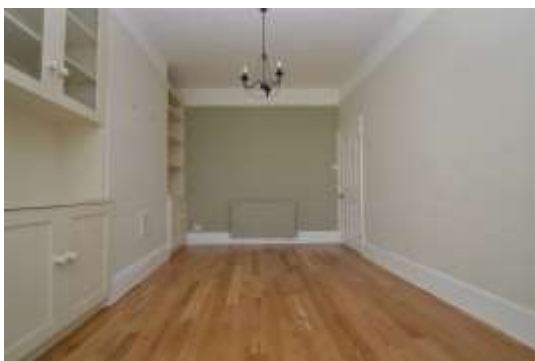
Summary

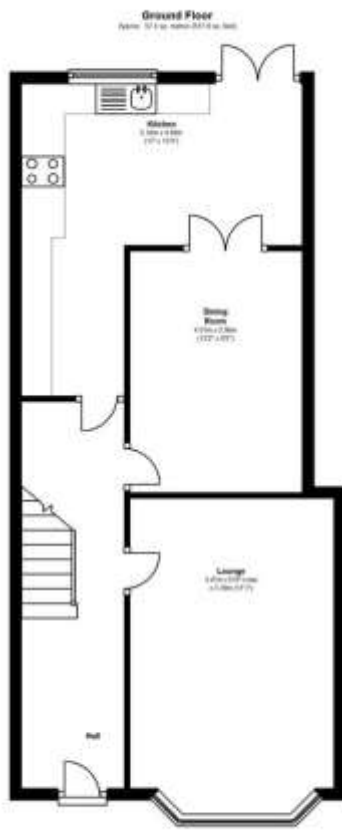
Brinkley's Estate Agents are pleased to present this stunning, four bedroom, family home on Ashen Grove in the ever-popular Wimbledon Park Grid. Within close proximity to Wimbledon Park Primary School, Wimbledon Park Underground Station (0.33 miles) and within walking distance to Earlsfield mainline station (easy access to the City) and close to all local amenities. The ground floor comprises a spacious, front reception room with cleverly built-in shelves and cupboards, a separate dining room leading to the fully-fitted kitchen, which wraps around, giving access to the dining room from either side. The garden has a decked area, offering the perfect entertainment space. On the first floor, the house further offers two double bedrooms and a single room (ideal for office/nursery) and a modern family bathroom. The loft has been carefully extended to offer a further double bedroom with an en-suite bathroom (double shower cubicle). Ideal family



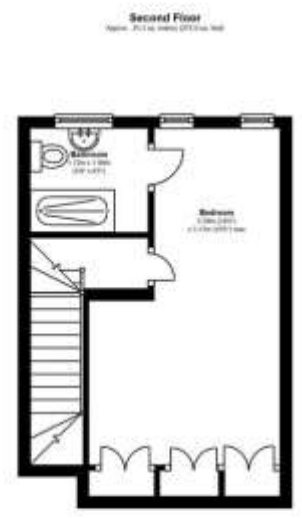
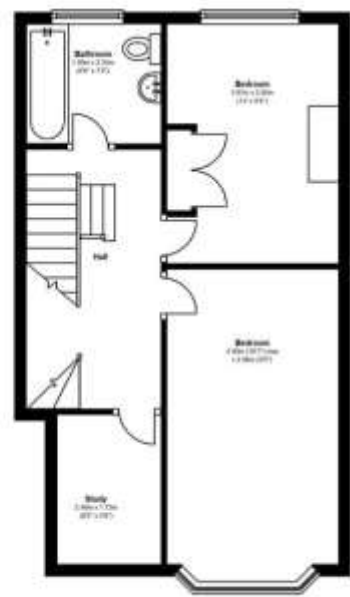
home. MUST BE SEEN. Please call our Wimbledon Park office on 020 8879 3718, Wimbledon Hill on 020 8944 2918 or our Putney office on 020 8785 3652.

Energy Efficiency Rating: D





First Floor
Area: 30.17 sq metres (325.5 sq feet)



Total area approx: 128.14 sq metres (1376.3 sq feet)