



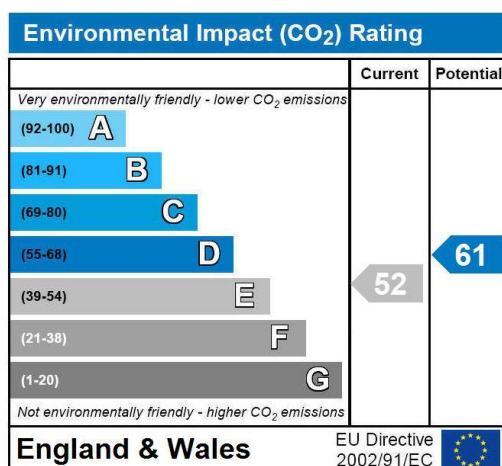
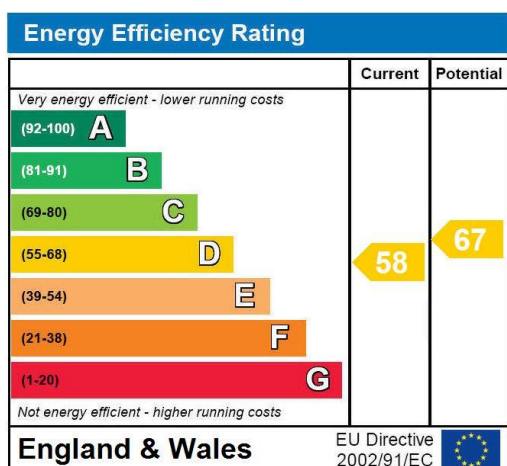
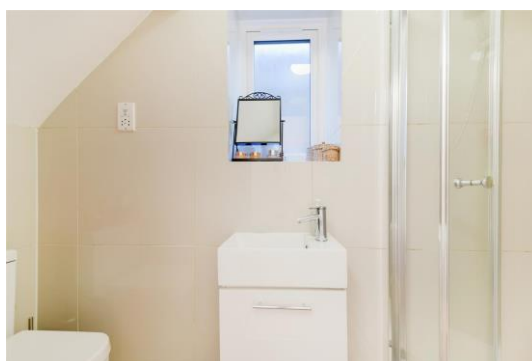
Flat, Worples Road, Wimbledon  
**£1,150 pcm**

**Summary**

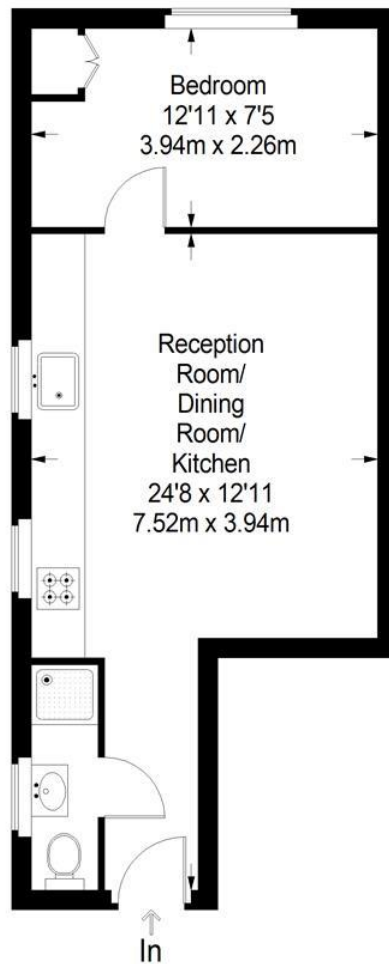
ABOUT THE PROPERTY: Brinkley's are pleased to bring to market this stunning, one bedroom, flat to let on Worples Road in Wimbledon. Within close proximity to Wimbledon Station (District Line, mainline, Tram Link), Raynes Park (mainline), excellent bus links, easy access to the A3 and close to all local amenities. The property has been refurbished to a high standard and would suit professional tenants. This flat comprises a large reception, fitted kitchen, a large double bedroom and a modern bathroom. MUST BE SEEN.

To arrange a viewing, please contact our Wimbledon Hill office on 02089442918, our Putney office on 02087853652 or our Wimbledon Park office on 02088793718.

Energy Efficiency Rating: D



# Worple Road



**Ground Floor = 360 sq ft**

Approximate Gross Internal Area  
GROUND FLOOR = 360 sq ft / 33.44 sq m  
Total = 360 sq ft / 33.44 sq m



This plan is for layout guidance only. Not drawn to scale unless stated. Windows and door openings are approximate. Whilst every care is taken in the preparation of this plan, please check all dimensions, shapes and compass bearings before making any decisions reliant upon them. (ID357409)