



Hanford Close, Southfields
£525,000

Summary

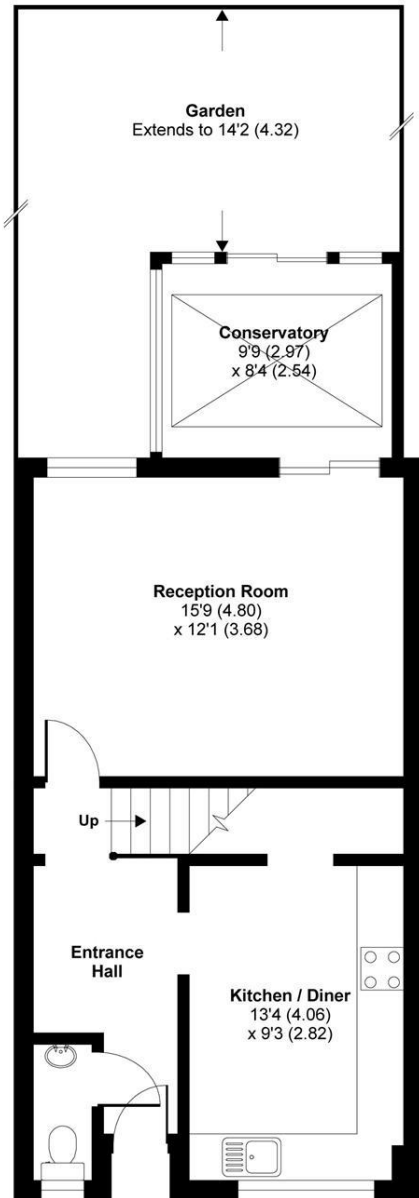
Brinkley's Estate Agents are pleased to offer to the market this spacious and well-presented, terrace house situated within a quiet residential close within easy reach of Southfields Underground Station (District Line) and Earlsfield mainline station. The accommodation briefly comprises; an entrance hall, a downstairs W.C., a reception room, conservatory and a fitted kitchen/breakfast room on the ground floor and three bedrooms and a family bathroom/WC on the first floor. Further benefits include gas C/H to radiators, double glazing, a private, patio garden to rear, residents' parking area and the added benefit of a large storage area with skylight in the loft. An early viewing of this fantastic family house is strongly recommended.

Hanford Close is a lovely tree-lined residential road, situated on the popular Southfields Grid. Ideally situated for Southfields Village with its shopping and transport facilities including the District Line Station, while Wimbledon Park with its various recreational facilities is within close proximity. Please contact Brinkley's in Wimbledon Park on 020 8879 3718 or Wimbledon Hill 020 8944 2918 today for more details or to arrange an internal viewing. Sole Agent

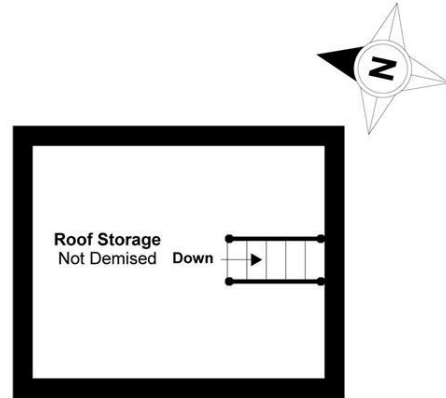


Hanford Close, London, SW18

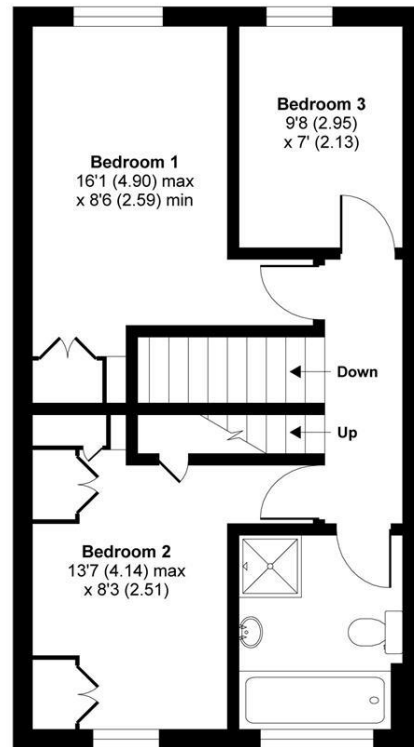
APPROX. GROSS INTERNAL FLOOR AREA 1037 SQ FT 96.3 SQ METRES (EXCLUDES ROOF STORAGE)



GROUND FLOOR



SECOND FLOOR



FIRST FLOOR

Whilst every attempt has been made to ensure the accuracy of the floor plan contained here, measurements of doors, windows and rooms are approximate and no responsibility is taken for any error, omission or misstatement. These plans are for representation purposes only as defined by RICS Code of Measuring Practice and should be used as such by any prospective purchaser. Specifically no guarantee is given on the total square footage of the property if quoted on this plan. Any figure given is for initial guidance only and should not be relied on as a basis of valuation.

