



Flat, Bisley House, Wimbledon Park Side, Southfields
£1,195 pcm

Summary

ABOUT THE PROPERTY: Brinkley's are instructed to let this recently refurbished, one double bedroom property, offered furnished. The property comprises a modern re-fitted kitchen and bathroom with a separate W.C. Well situated adjacent to the beautiful Wimbledon common with excellent bus links, while being a short walk to Southfields underground. Suitable for professional couple/single persons.

HOW TO VIEW: Please call our Wimbledon Hill office on 020 8944 2918, our Wimbledon Park branch on 020 8879 3718 or our Putney office on 020 8785 3652, for more information and to arrange a viewing. Open 7 days a week. viewings Mon- Fri 8-8, Weekends 9-6.

Open 7 days a week; please call to make an appointment.

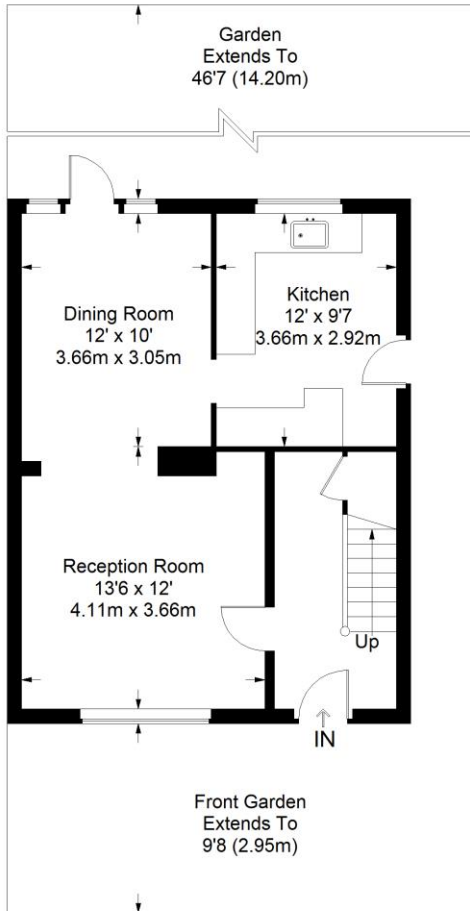
Energy Efficiency Rating: B



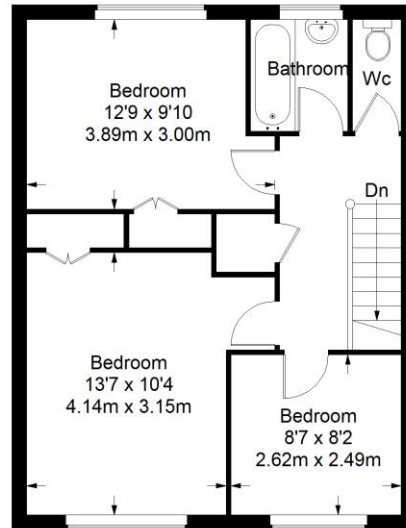
Energy Efficiency Rating		
	Current	Potential
Very energy efficient - lower running costs		
(92-100) A		
(81-91) B	85	86
(69-80) C		
(55-68) D		
(39-54) E		
(21-38) F		
(1-20) G		
Not energy efficient - higher running costs		
England & Wales	EU Directive 2002/91/EC	

Environmental Impact (CO ₂) Rating		
	Current	Potential
Very environmentally friendly - lower CO ₂ emissions		
(92-100) A		
(81-91) B	84	85
(69-80) C		
(55-68) D		
(39-54) E		
(21-38) F		
(1-20) G		
Not environmentally friendly - higher CO ₂ emissions		
England & Wales	EU Directive 2002/91/EC	

Haydons Road



Ground Floor = 495 sq ft



First Floor = 491 sq ft

Approximate Gross Internal Area
 GROUND FLOOR = 495 sq ft / 45.99 sq m
 FIRST FLOOR = 491 sq ft / 45.61 sq m
 Total = 986 sq ft / 931.60 sq m



This plan is for layout guidance only. Not drawn to scale unless stated. Windows and door openings are approximate. Whilst every care is taken in the preparation of this plan, please check all dimensions, shapes and compass bearings before making any decisions reliant upon them. (ID357409)