



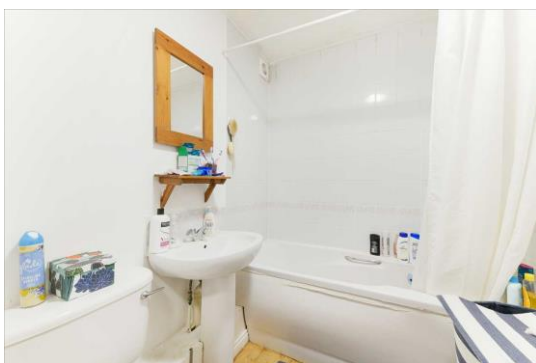
Flat, Selhurst Close, Parkside, Southfields  
**£1,200 pcm**

**Summary**

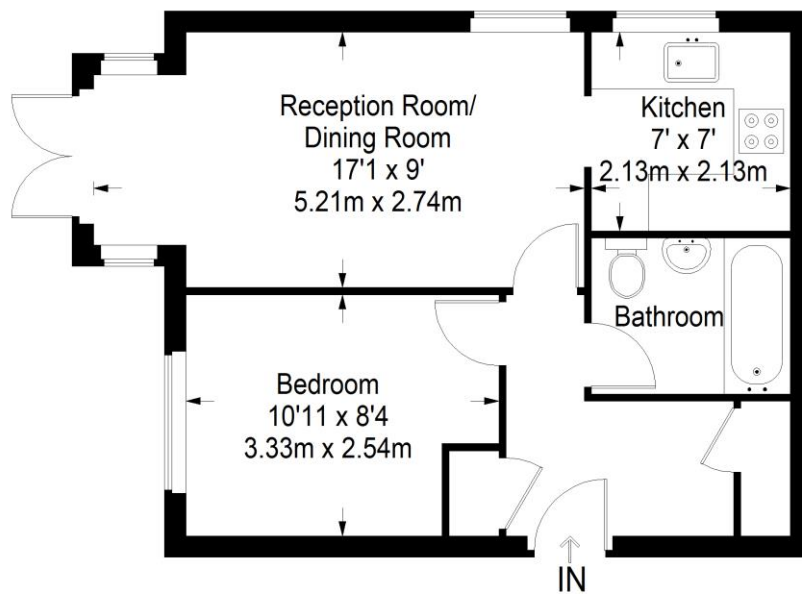
ABOUT THE PROPERTY: Brinkley's Estate Agents are pleased to present this modern, one bedroom, ground floor flat in Selhurst Close in Wimbledon Parkside. Within close proximity to Wimbledon Village, Southfields Underground Station (District Line), opposite Wimbledon Common, easy access to the A3 and close to local amenities. The property benefits from off-street parking, a large reception, a double bedroom, fitted kitchen and a bathroom. Offered as furnished and ideal for professional tenants. **MUST BE SEEN.**

HOW TO VIEW: Please call our Wimbledon Hill office on 020 8944 2918, our Wimbledon Park branch on 020 8879 3718 or our Putney office on 020 8785 3652, for more information and to arrange a viewing. Open 7 days a week. Viewings Mon- Fri 8-8, Weekends 9-6.

Energy Efficiency Rating: D



# Selhurst Close



**Ground Floor = 401 sq ft**

Approximate Gross Internal Area  
GROUND FLOOR = 401 sq ft / 37.25 sq m  
Total = 401 sq ft / 37.25 sq m



This plan is for layout guidance only. Not drawn to scale unless stated. Windows and door openings are approximate. Whilst every care is taken in the preparation of this plan, please check all dimensions, shapes and compass bearings before making any decisions reliant upon them. (ID357409)

