



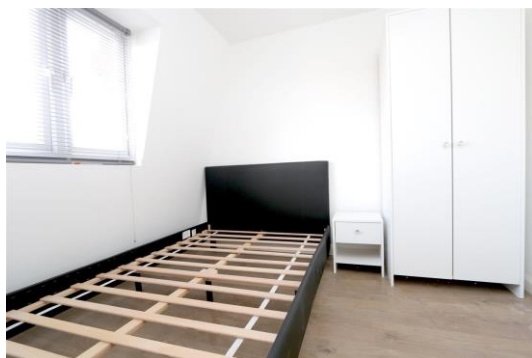
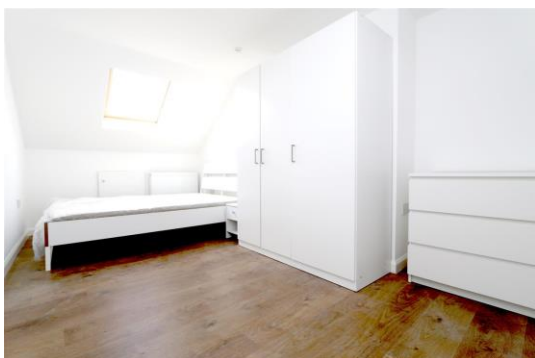
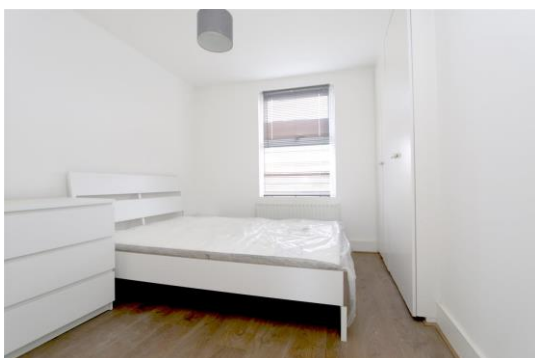
Flat, Haydons Road, Wimbledon
£2,195

Summary

ABOUT THE PROPERTY: Brinkley's Estate Agents are excited to offer this beautifully-refurbished, split-level apartment, located within easy reach of Wimbledon's Northern and District line tube stations, National Rail and Thames Link stations. The first floor of the apartment consists of a great, open-plan kitchen and living room, two double bedrooms and a bathroom. To the second floor you have another bathroom and a further two double bedrooms. The property is offered either furnished or unfurnished and is ideal for professional sharers. The property **MUST BE SEEN** and can be viewed by appointment only.

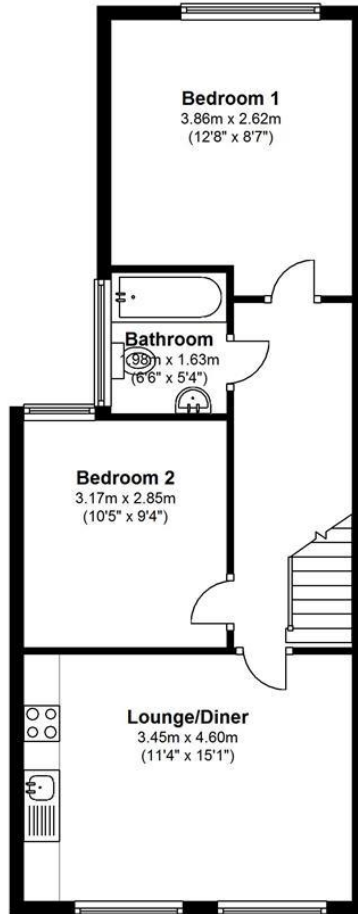
HOW TO VIEW: Please call our Wimbledon Hill office on 020 8944 2918, our Wimbledon Park branch on 020 8879 3718 or our Putney office on 020 8785 3652, for more information and to arrange a viewing. Open 7 days a week. viewings Mon- Fri 8-8, Weekends 9-6.

Energy Efficiency Rating: D



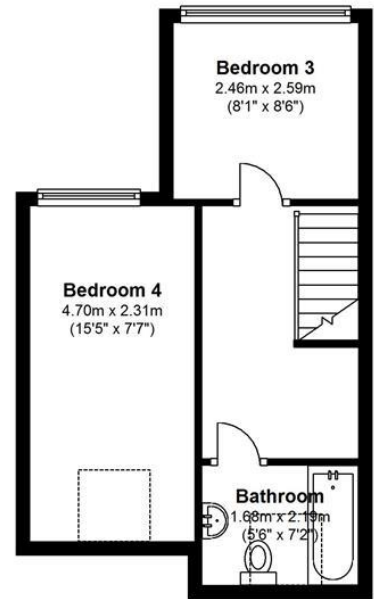
First Floor

Approx. 48.4 sq. metres (520.7 sq. feet)



Second Floor

Approx. 29.6 sq. metres (318.2 sq. feet)



Ground Floor

Approx. 4.2 sq. metres (45.3 sq. feet)



Total area: approx. 82.2 sq. metres (884.3 sq. feet)

