



Flat, Willows Court, Sir Cyril Black Way, Wimbledon
£1,500 pcm

Summary

ABOUT THE PROPERTY: Brinkley's Estate Agents are pleased to present this exclusive, two double bedroom, apartment located off Sir Cyril Black Way on the second floor of Willows Court, in the heart of Wimbledon. Within close proximity to Wimbledon centre (District Line, Tram Line and National Rail) and close to all local amenities. The property benefits from secure, underground parking, two double bedrooms, a modern and spacious, living room (double reception room) with a Juliet balcony and a fitted kitchen. **MUST BE SEEN.**

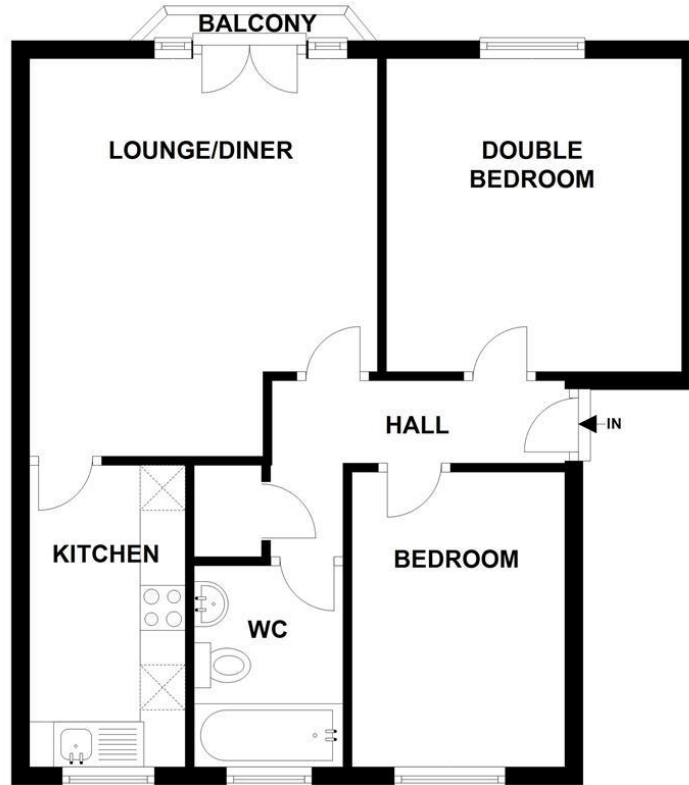
To arrange a viewing, please contact our Wimbledon Hill office on 02089442918, our Putney office on 02087853652 or our Wimbledon Park office on 02088793718.

Energy Efficiency Rating: B



FLOOR PLAN

APPROX. 51.1 SQ. METRES (549.6 SQ. FEET)



TOTAL AREA: APPROX. 51.1 SQ. METRES (549.6 SQ. FEET)

Energy Efficiency Rating		
	Current	Potential
Very energy efficient - lower running costs		
(92-100) A		
(81-91) B	85	86
(69-80) C		
(55-68) D		
(39-54) E		
(21-38) F		
(1-20) G		
Not energy efficient - higher running costs		
England & Wales	EU Directive 2002/91/EC	

Environmental Impact (CO ₂) Rating		
	Current	Potential
Very environmentally friendly - lower CO ₂ emissions		
(92-100) A		
(81-91) B	84	85
(69-80) C		
(55-68) D		
(39-54) E		
(21-38) F		
(1-20) G		
Not environmentally friendly - higher CO ₂ emissions		
England & Wales	EU Directive 2002/91/EC	