



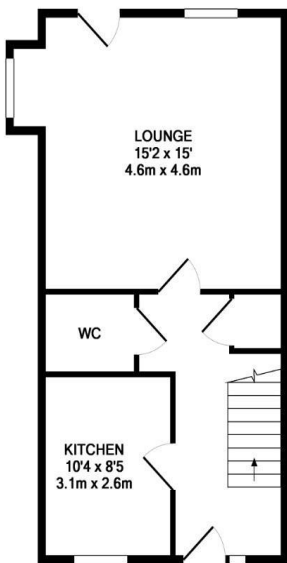
Offers Over:  
£260,000



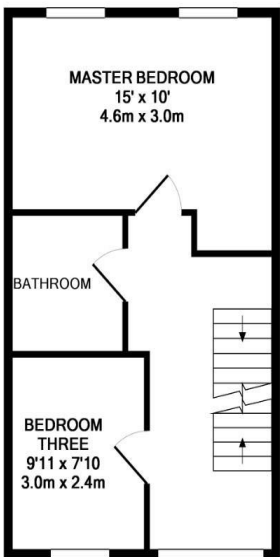
27 Samuel Peto Way, Ashford, TN24

**Key Features**

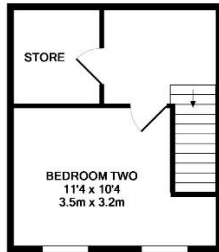
- STUNNING 3 BEDROOM END OF TERRACE TOWN HOUSE
- STILL UNDER NHBC WARRANTY
- 15' X 15' LOUNGE DINER
- FITTED KITCHEN
- ALLOCATED PARKING
- UNDER 1 MILE TO ASHFORD INTERNATIONAL STATION
- DOWNSTAIRS WC
- REAR GARDEN



GROUND FLOOR



1ST FLOOR



2ND FLOOR

**Bradley Bishop**

Estate Agents  
Sales and Lettings

[www.bradley-bishop.co.uk](http://www.bradley-bishop.co.uk)  
[info@bradley-bishop.co.uk](mailto:info@bradley-bishop.co.uk)  
01233 627161 – 01622 768470

**Bradley Bishop**

Estate Agents  
Sales and Lettings



**The Oast, Evegat Business Park, Station Road, Smeth, TN25 6SX**  
[info@bradley-bishop.co.uk](mailto:info@bradley-bishop.co.uk) 01233 627 161 [www.bradley-bishop.co.uk](http://www.bradley-bishop.co.uk)

These details are intended to give a fair description of the property but their accuracy cannot be guaranteed, and they do not constitute an offer of contract. Intending purchasers must rely on their own inspection of the property. None of the above appliances/services have been tested by ourselves. We recommend purchasers arrange for a qualified person to check all appliances/services before legal commitment