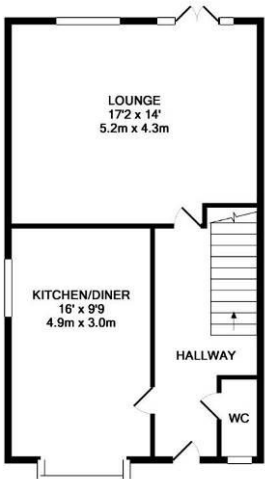




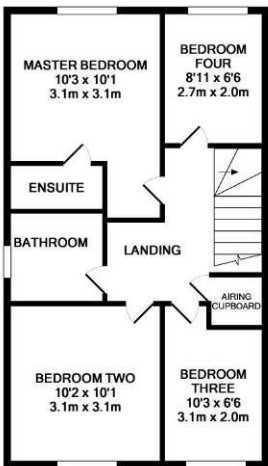
Guide Price
 £360,000 - £380,000



Astley Terrace, Hastings Road, Maidstone,
 ME15



GROUND FLOOR
 APPROX. FLOOR
 AREA 523 SQ. FT.
 (48.6 SQ. M.)



1ST FLOOR
 APPROX. FLOOR
 AREA 513 SQ. FT.
 (47.6 SQ. M.)

Key Features

- FOUR BEDROOM SEMI DETACHED HOME
- SITUATED WITHIN HALF A MILE FROM MAIDSTONE TOWN CENTRE
- DRIVEWAY PARKING FOR TWO VEHICLES
- MASTER BEDROOM WITH EN SUITE
- REAR GARDEN MEASURING 38 SQUARE FOOT
- DOWNSTAIRS CLOAKROOM
- LOUNGE OVERLOOKING REAR GARDEN
- 0.5 MILES FROM MAIDSTONE STATION WITH DIRECT LINKS TO LONDON
- KITCHEN / BREAKFAST ROOM

Bradley Bishop

Estate Agents
Sales and Lettings

www.bradley-bishop.co.uk
info@bradley-bishop.co.uk
01233 627161 – 01622 768470

Bradley Bishop

Estate Agents
Sales and Lettings



Bradley Bishop Estate Agents

info@bradley-bishop.co.uk 01622 768470 www.bradley-bishop.co.uk