

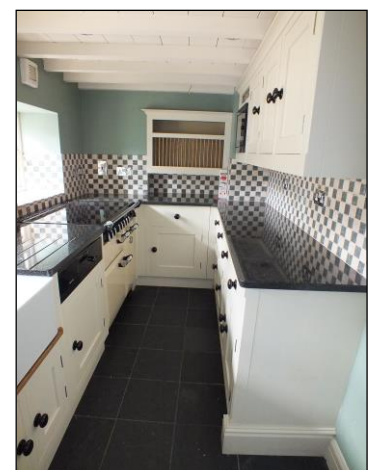


£270,000

12A Arbory Road, Castletown, IM9 1NA

A Beautifully Presented and Tastefully Decorated Two/Three Bedroom Cottage.
Situated Within the Ancient and Popular Capital of Castletown.
Walking Distance of Many Heritage Sites, Schools, Beach and Shops.
Retaining Many Original Features with Superb Attention to Detail.
Lounge with Manx Stone Fireplace and Multi fuel Burner. Separate Dining Room.
Modern Fitted Kitchen with Granite Worksurfaces. Modern, Predominantly Tiled Bathroom.
2 Double Bedrooms, One with an Ensuite Shower Room.
Large Occasional Bedroom or Hobbies Room to the Second Floor.
A Combination of Original Sash Windows & Modern Timber Framed Double Glazing.
Enclosed Cortyard Garden with Small Store & Log Store.

*** Ideal, Rental or Lock Up and Leave - Close to Ronaldsway Airport ***



DIRECTIONS

Heading into Castletown from a Northerly direction. Pass the airport on the left hand side. At the roundabout bear to the right and continue to the next roundabout, again, bear right and continue to the traffic lights. Proceed straight over and take the second turning on the left hand side onto Arbory Road. As the road bears sharply to the right continue straight ahead where number 12A will be found just a short distance from the junction on the right hand side.

OVERVIEW

With fabulous attention to detail throughout this superbly presented cottage with a delightful patio garden. Features include a Manx flagstone, exposed Manx Stone fireplace, beams, oak doors and brass light and power switches. Situated within walking distance of Castletown Square, shops, beach and schools including the renowned Buchan School and King Williams College.



Register on our Mailing List for ...

ACCOMMODATION

GROUND FLOOR

The solid oak door opens into the porch with flagstone floor, one of which has been beautifully etched with the Three Legs of Man symbol. A wall mounted cupboard houses the electric meter and consumer unit. A half glazed oak door opens into the lounge.

Lounge 4.47m (14'8") x 4.01m (13'2")

Full of character and charm with the flagstone floor continuing through from the porch. An exposed Manx stone fireplace with an inset multi fuel burner. The original timber framed sliding sash window is to the front elevation. Wired for both wall and ceiling lights with a large original beam running the width of the room. The gas meter is located to one corner. Television, satellite and telephone points. An oak door leads to the dining room. Clear opening to the kitchen.



Dining Room 4.44m (14'7") x 2.67m (8'9")

The slate flooring continues through from the lounge. Twin, old style radiators. Exposed Manx Stone feature fireplace. Wired for wall lights. The original timber framed sliding sash window is to the front elevation. Telephone point. The original exposed wooden beam runs the width of the room.



Register on our Mailing List for ...

Kitchen 2.79m (9'2") x 1.83m (6'0")

Fitted with a range of matching cream, shaker style base, wall and drawer units. Background tiling complements the granite work surfaces with an inset ceramic, Belfast sink with mixer tap. Integrated dishwasher, microwave and fridge. Space for a range style cooker. Dual double glazed timber framed window to the rear elevation. Tongue and groove ceiling with recessed down lights. Recessed plate rack.



Rear Hall

Stairs with storage beneath lead to the first floor. A half glazed stable door opens to the patio garden. Wall mounted vertical radiator.

FIRST FLOOR

Landing

Oak flooring runs throughout the landing. A large recess with curtain and rail which houses the gas fired boiler and also provides space and plumbing for a washing machine.

Bathroom 3.20m (10'6") x 1.83m (6'0")

A beautifully presented, predominantly tiled room fitted with a modern white suite comprising a push button flush WC, large bath with mixer tap and shower attachment, a vanity sink mounted onto a storage unit and a corner, glazed enclosure with a fully plumbed shower installed. A single glazed timber framed window to the rear elevation. Recessed down lights. Chrome ladder style towel warmer.



Register on our Mailing List for ...

Bedroom 2 4.60m (15'1") max x 3.96m (13'0") max

The oak flooring continues through from the landing into this L-shaped double room with original, dual sliding sash windows to the front elevation. Wired for wall lights. Old style radiator



Bedroom 1 4.62m (15'2") max x 3.05m (10'0") max

A double room with the original timber framed sliding sash window to the front elevation. Old style radiator. Wired for wall lights. Oak floor covering. Door to the Ensuite.



Ensuite Shower Room 1.98m (6'6") x 1.19m (3'11")

Fitted with a modern white, duo flush WC and a wall mounted hand basin. To one end is a fully tiled and glazed enclosure with a modern 'Aqualisa' shower installed. Ceramic floor tiles. Chrome ladder style towel warmer. 'Manrose' extractor fan. Recessed down lights.

Register on our Mailing List for ...

SECOND FLOOR

Occasional Bedroom/Hobbies Room 6.58m (21'7") x 4.19m (13'9")

Oak stairs lead from the first floor into the loft room, creating an ideal occasional bedroom or hobbies room. Exposed original 'A' frame beams. Oak floor covering. A 'Velux' roof window is to the front elevation.



OUTSIDE

Patio Garden

A delightful, enclosed rear patio garden which faces south east therefore enjoying the sunshine throughout most of the day. To one corner is a brick built log store. Electric point. Exterior light.



Services Gas fired central heating. Mains water, electric and drainage. Mixture of both single and double glazed timber framed windows.

Tenure Freehold

Rateable Value For further information please contact the rates department on (01624) 685661.

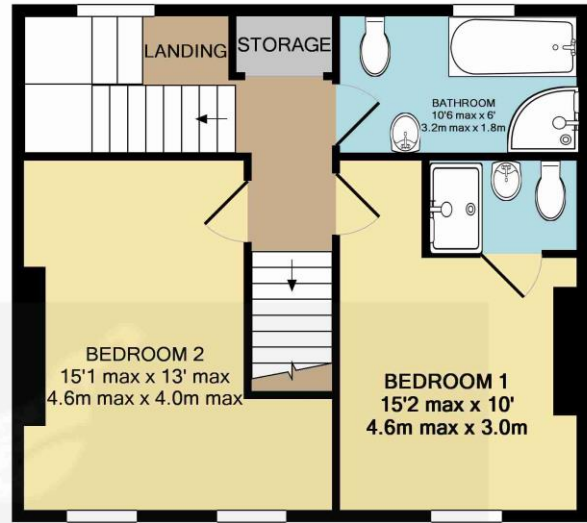
Viewings Strictly by appointment with the Agent Quayles Limited.

Register on our Mailing List for ...

FLOOR PLAN



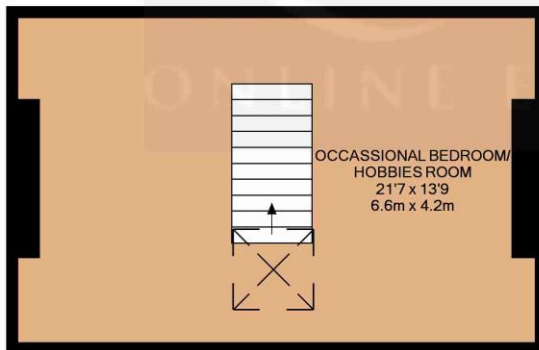
GROUND FLOOR
APPROX. FLOOR
AREA 444 SQ.FT.
(41.2 SQ.M.)



1ST FLOOR
APPROX. FLOOR
AREA 462 SQ.FT.
(42.9 SQ.M.)

12A ARBORY ROAD
TOTAL APPROX. FLOOR AREA 1187 SQ.FT. (110.2 SQ.M.)

Whilst every attempt has been made to ensure the accuracy of the floor plan contained here, measurements of doors, windows, rooms and any other items are approximate and no responsibility is taken for any error, omission, or mis-statement. This plan is for illustrative purposes only and should be used as such by any prospective purchaser. The services, systems and appliances shown have not been tested and no guarantee as to their operability or efficiency can be given
Made with Metropix ©2013



2ND FLOOR
APPROX. FLOOR
AREA 281 SQ.FT.
(26.1 SQ.M.)

Whilst all details are believed to be correct neither Quayles Limited, their employees or clients can guarantee their accuracy, nor are they intended to form part of any contract. Our photographs are often taken using a camera with a wide angled lens, whilst this is useful for capturing a larger area it can also result in distortion or partial stretching of an image.

All measurements given are approximate. It is not our intention to mislead and therefore we recommend a personal inspection of the property. Prospective purchasers should rely on their own enquiries and legal searches before committing to purchase and advice should be sought from the appropriate professionals where required.