

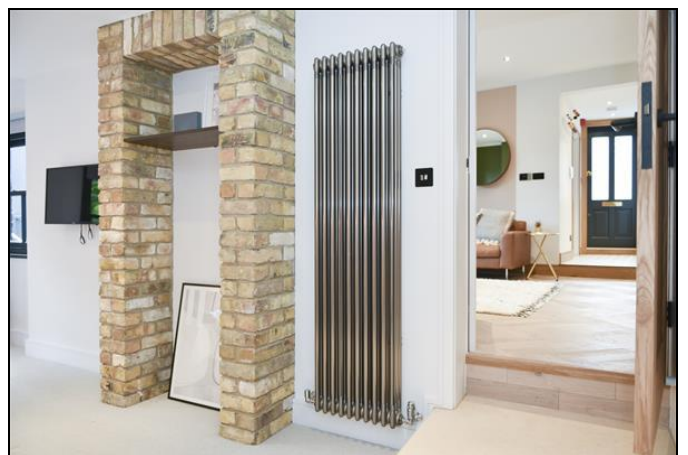


Tranquil Vale, Blackheath Village, SE3

£3,000 Pcm

To include all bills. Newly restored, redesigned, beautifully equipped and furnished ground floor apartment set at the rear of this imposing building that has undergone total renovation and houses Space NK and Blackheath yoga. A stone's throw from the open heath and all the amenities of Blackheath Village with an array of shops, restaurants cafes and bars and of course Blackheath Station, with its excellent train service to the City, West End and Victoria and one stop change to the DLR.

KERSHAW'S



Finished in high quality materials and fittings with bespoke fitted kitchen two luxury shower rooms, solid floors, low voltage Internal LED spotlights throughout with a single feature external light fitting.

Finished in high quality materials and fittings with bespoke fitted kitchen, two luxury shower rooms, solid floors, low voltage Internal LED spotlights throughout with a single feature external light fitting.

Systemline with Bluetooth capability and new copper wiring throughout. New bespoke sash windows with original brass ironmongery. Industrial column radiators. Contemporary color pallet used throughout whilst retaining original features. 'Nest' thermostatic control with bluetooth capability.

Entrance

Personal solid entrance door with deadlock and nightlock, opening into entrance hall with low voltage ceiling lighting.

Intercom system included with integrated speaker system. Engineered oak herringbone style flooring.

Kitchen/Dining/Living

Walk through to open plan kitchen, fully furnished dining, living room. Beautiful fitted kitchen in sleek grey units with Bosch appliances. Indesit washing machine and Lamona wine fridge. Engineered oak herringbone style flooring. Wide angled bay window to the rear with doors to Juliet Balcony.

Bedroom 1

Fully furnished, Sash window to the rear and additional casement window to the side, low voltage ceiling lighting. Carpeted flooring.

Shower room

Tiled in over sized Porcelain tiles, under floor heating. Shower cubicle, wash basin and w.c. Cupboard housing the Worcester Bosch Green Star rated combination boiler.

Bedroom 2

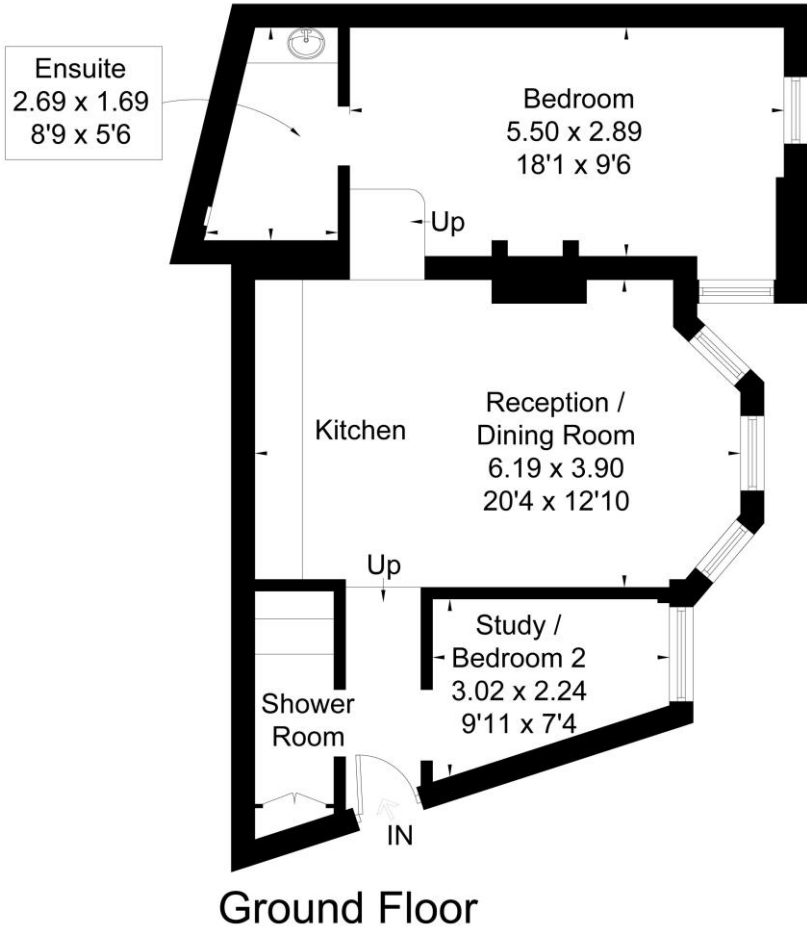
Fully furnished, Low voltage lighting, sash window to the rear, carpeted flooring.

EnSuite Shower Room

Over sized Porcelain tiles, underfloor heating. Circular stone wash hand basin, shower cubicle and w.c.

KERSHAW'S

Approximate Area = 57.3 sq m / 617 sq ft



Ground Floor

Surveyed and drawn in accordance with the International Property Measurement Standards (IPMS 2: Residential)
fourwalls-group.com 252271

